



Republic of Rwanda
Ministry of Health

rbc Rwanda
Biomedical
Centre
Healthy People, Wealthy Nation

WEEKLY EPIDEMIOLOGICAL BULLETIN

WEEK **21** 18-24 May 2026





Editorial message

Effective and efficient disease surveillance systems contribute to the reduction of morbidity, disability and mortality from disease outbreaks and health emergencies.

This weekly bulletin presents the epidemiological status of the priority diseases, conditions, and public-health events under surveillance in Rwanda. These data aim to trigger a rapid response for rapid impact, actions and results oriented, a proactive preparedness, risk mitigation and prevention, intelligence, real-time information, and communication for decision making.

KEY EPIDEMIOLOGICAL HIGHLIGHTS



Event Based Surveillance (EBS) Highlights:



Alerts from Impuruza system: 22 alerts



13 human deaths



2 dog bites



3 alerts of human unexplained bleeding



2 of many persons with fever in the same area



1 alert of many persons with diarrhea in the same area



1 alert of an increase of the persons who had the same signs of disease at the health facility.

Alerts from EIOS: 4 alerts

WHO warns Ebola outbreak is "overtaking" response in DRC

Brucellosis cases linked to raw goat milk in Russia

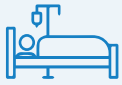
Global dengue cases surpass 1 million; Taiwan reports first local case

Ebola cases increase in Uganda amid regional concern

UMUJYANAMA W'UBUZIMA
MINISITERI Y'UBUZIMA
RBC RWANDA
BIOMEDICAL
CENTER
Healthy People. A Wealthy Nation



Indicator Based Surveillance (IBS) Highlights:



675 cases of immediately reportable diseases were notified by **174** health facilities nationwide. These included cases of chicken pox, severe malaria, suspected shigellosis, suspected measles/rubella, suspected Mpox, suspected foodborne illnesses, acute flaccid paralysis, suspected cholera, suspected human influenza, suspected VHF, suspected bacterial meningitis and snake bites.



68 deaths were reported by **25** health facilities through the electronic Integrated Disease Surveillance and Response (eIDSR) system. Most deaths were perinatal deaths and deaths of children under 5 years.



Outbreaks and events updates in week 21



Weekly updates on ongoing outbreaks:

Ongoing outbreaks:

- ⚠️ Mpox outbreak
- ⚠️ Measles outbreaks in different districts of Rwanda
- ⚠️ Cholera outbreak in Rusizi and Rubavu districts

New outbreak:

- ⚠️ Suspected foodborne illnesses in Rutsiro district



Completeness and timeliness



In Epi Week 21, the overall completeness and timeliness of surveillance data reporting in Rwanda were 99% and 97%, respectively.



Weekly updates on Event Based Surveillance (EBS)

Description: Event-Based Surveillance (EBS) is a type of public health surveillance system that detects and reports unusual health events or disease outbreaks in a timely manner. The system is designed to detect signals of potential public health threats and allow a rapid response to prevent or control the spread of diseases. RBC is implementing EBS through the PHS&EPR Division.

Currently, an electronic Community Event-Based Surveillance System (eCBS), Hotline and Epidemic Intelligence from Open Source (EIOS) are being used to detect and report events of public health importance from the community and media. The process for the establishment of other types of EBS is still ongoing.

Alerts from Impuruza system: 22 signals

22 were notified from the community, while 1 was from a health facility. They included 13 human deaths in the community, 2 dog bites, 3 alerts of human unexplained bleeding, 2 alerts of many persons with fever in the same area, 1 alert of many persons with diarrhea in the same area, and 1 alert of an increase of the persons who had the same signs of disease at the health facility.

Alerts from EIOS: 4 alerts

1. WHO warns Ebola outbreak is “overtaking” response in DRC

WHO Director-General Tedros Adhanom warned that the Ebola outbreak in the Democratic Republic of Congo is worsening rapidly, with over 900 suspected cases and around 220 suspected deaths reported. The outbreak, linked to the Bundibugyo strain, originated in Ituri province but spread to North Kivu, including urban areas such as Goma, and imported cases were confirmed in Uganda. WHO described the situation as extremely serious and warned conditions may worsen before improving. Key challenges include lack of approved vaccines or effective antivirals for the Bundibugyo strain, insecurity and militia violence affecting outbreak response, attacks on Ebola treatment centers, and community resistance to safe burial practices. WHO deployed emergency response teams and initiated experimental monoclonal antibody trials.

<https://www.expreso.ec/internacional/tedros-adhanom-director-oms-sobre-brote-ebola-epidemia-supera-283356.html>

2. Brucellosis cases linked to raw goat milk in Russia

Health authorities in the Astrakhan region of Russia reported seven human brucellosis cases linked to consumption of raw goat milk from infected animals. One patient has been discharged, while six remain hospitalized in stable condition. Most affected individuals were members and staff of a local monastery where livestock were raised. Authorities imposed a one-month quarantine and launched an investigation into infected farm products. Officials warned that brucellosis symptoms may resemble flu initially (fever, weakness) before progressing to joint and back pain, and stressed early medical care to avoid chronic complications. High-risk groups include farmers, livestock handlers, and people consuming

<https://gphin.canada.ca/cepr/showarticle.jsp?docId=1021626538>

3. Global dengue cases surpass 1 million; Taiwan reports first local case

Global dengue fever cases exceeded 1.02 million in 2026, with over 300 deaths reported worldwide. Taiwan recorded its first locally transmitted dengue case of the year in a man in his 60s from Kaohsiung infected with dengue virus type 1. By May 25, Taiwan had confirmed 64 dengue cases, mostly imported, particularly from Indonesia, the Maldives, and Vietnam. Authorities warned that warmer weather and the rainy season increase mosquito breeding risk and urged communities to implement mosquito prevention measures (“patrol, empty, clean, scrub”) to eliminate standing water. Officials also advised use of mosquito repellents and protective clothing. The article additionally reported Taiwan’s first meningococcal meningitis death of the year in a woman in her 60s, highlighting the importance of seeking urgent care for symptoms such as severe headache and neck stiffness.

<https://gphin.canada.ca/cepr/showarticle.jsp?docId=1021623888>

Weekly updates on Event Based Surveillance (EBS)

4. Ebola cases increase in Uganda amid regional concern

Uganda reported new Ebola infections, increasing the total number of confirmed cases to seven. The newly infected individuals are healthcare workers from a private health facility in Kampala, raising concerns about healthcare-associated transmission. Both patients were isolated and contact tracing started immediately. The outbreak is linked to the Bundibugyo strain of Ebola near the Uganda-DRC border, increasing fears of regional spread. Authorities emphasized isolation, contact tracing, and reinforced infection prevention measures to contain transmission, while WHO called for stronger international coordination due to cross-border risks.

<https://noticias.r7.com/fala-ciencia/casos-de-ebola-aumentam-em-uganda-e-oms-declara-emergencia-internacional-26052026/CATOR>



WEEKLY UPDATES ON EVENT-BASED SURVEILLANCE (EBS)

Description: Rwanda had implemented Indicator-Based Surveillance according to the IDSR guidelines 3rd edition where 45 priority diseases, health conditions, and public health events are being monitored and reported from health facilities countrywide on a regular basis.

Diseases that are prone to outbreaks are reported immediately within 24 hours after detection, while diseases that are considered endemic are reported on a weekly basis every Monday before midday.

A. IMMEDIATE REPORTABLE DISEASES - EPI WEEK 21

During this Epi week,

675 cases of immediately reportable diseases were notified by 174 health facilities:



6 cases of chicken pox (varicella) were reported by 3 health facilities.



561 suspected cases of Measles/Rubella were reported by 147 health facilities (they are described in the update on the outbreaks section)



14 cases of severe malaria were reported by 11 health facilities.



7 suspected cases of Mpox were reported by 5 health facilities; the samples were tested, and they were negative.



21 cases of suspected foodborne illnesses were reported by 4 health facilities



12 snake bite cases were reported by 7 health facilities.



1 case of acute flaccid paralysis was reported by 1 health facility



11 suspected cases of shigellosis were reported by 4 health facilities; the samples were taken and sent to the laboratory



25 suspected cases of cholera were reported by 6 health facilities



3 suspected cases of human influenza were reported by 2 health facilities; the samples were taken and sent to the laboratory

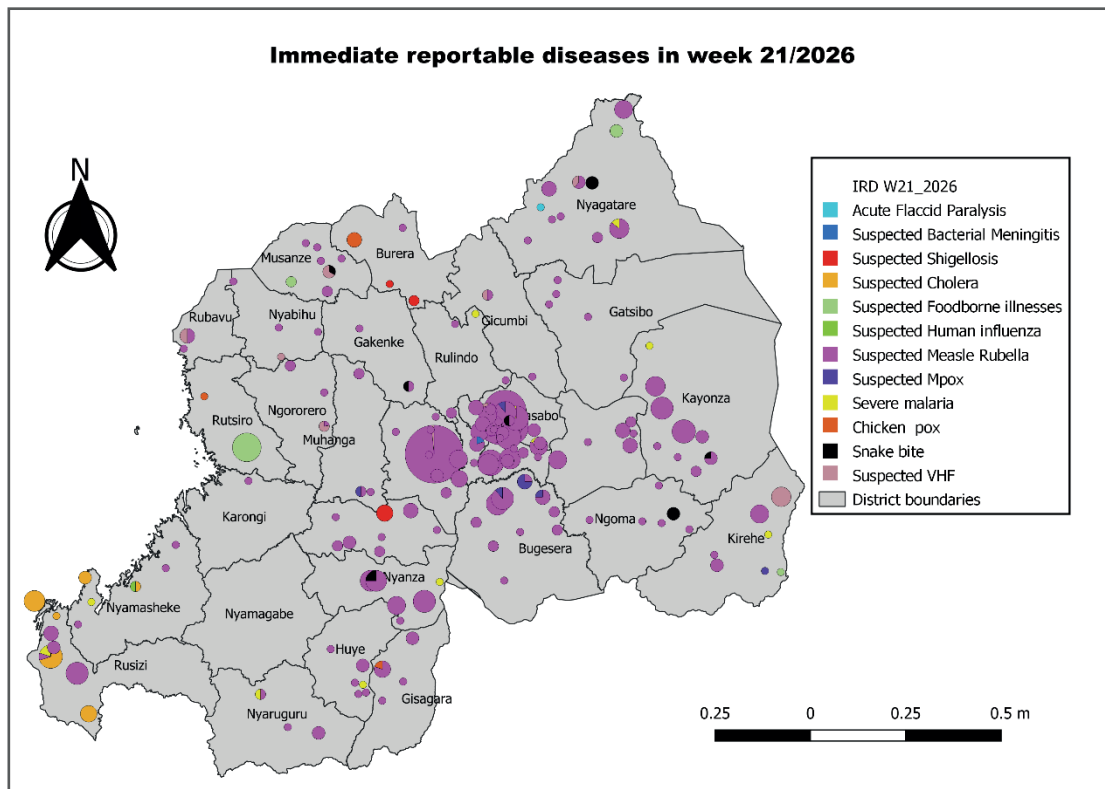


1 suspected case of bacterial meningitis was reported by 1 health facility; the sample was taken and sent to the laboratory



29 suspected cases of VHF were reported by 10 health facilities; the samples were taken and sent to the laboratory

Geographical distribution of immediate reportable disease cases notified during the epi week 21/2026

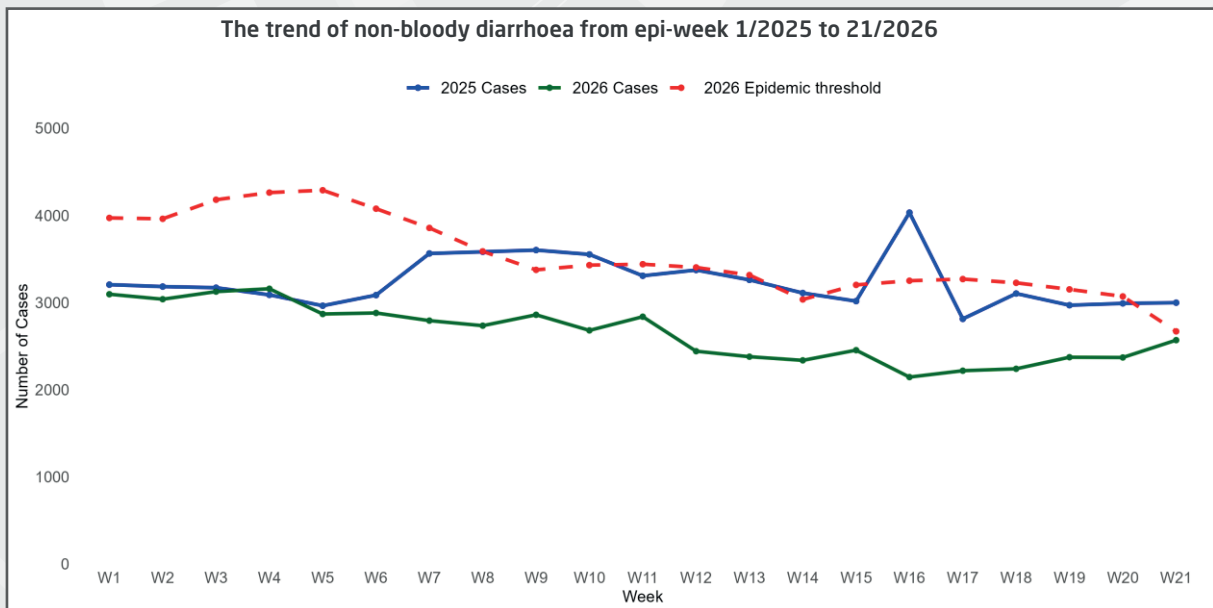
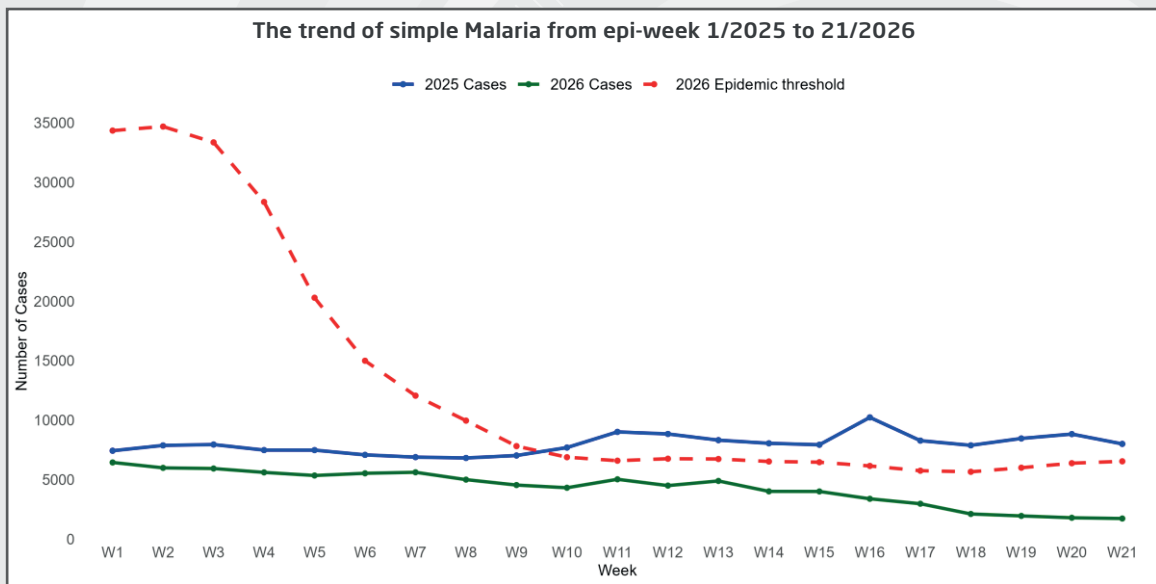
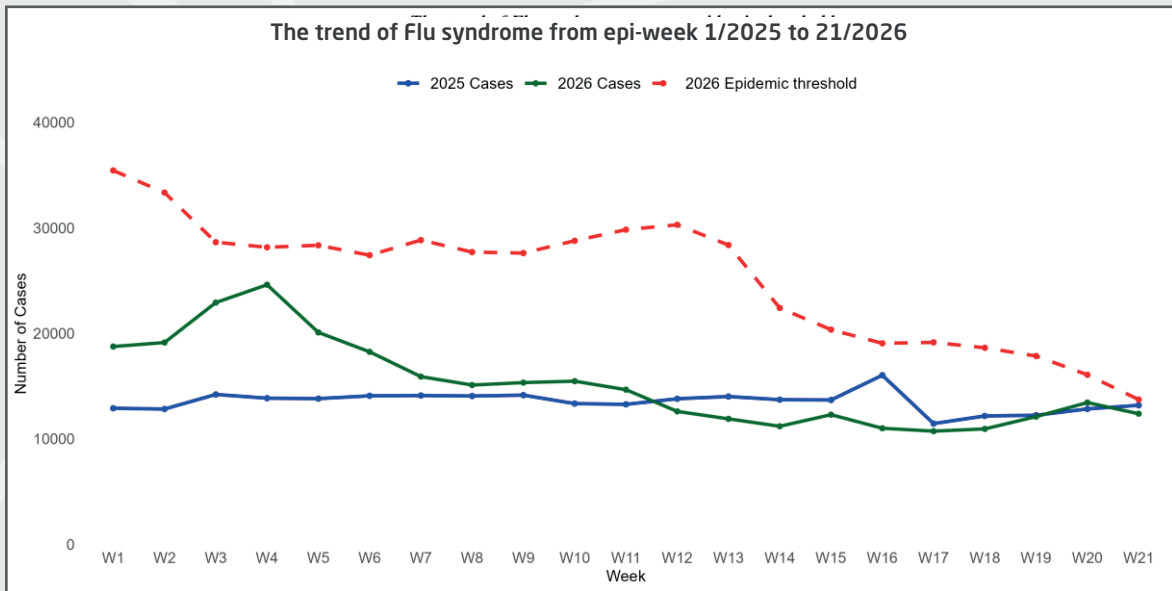


B. WEEKLY REPORTABLE DISEASES - EPI WEEK 21

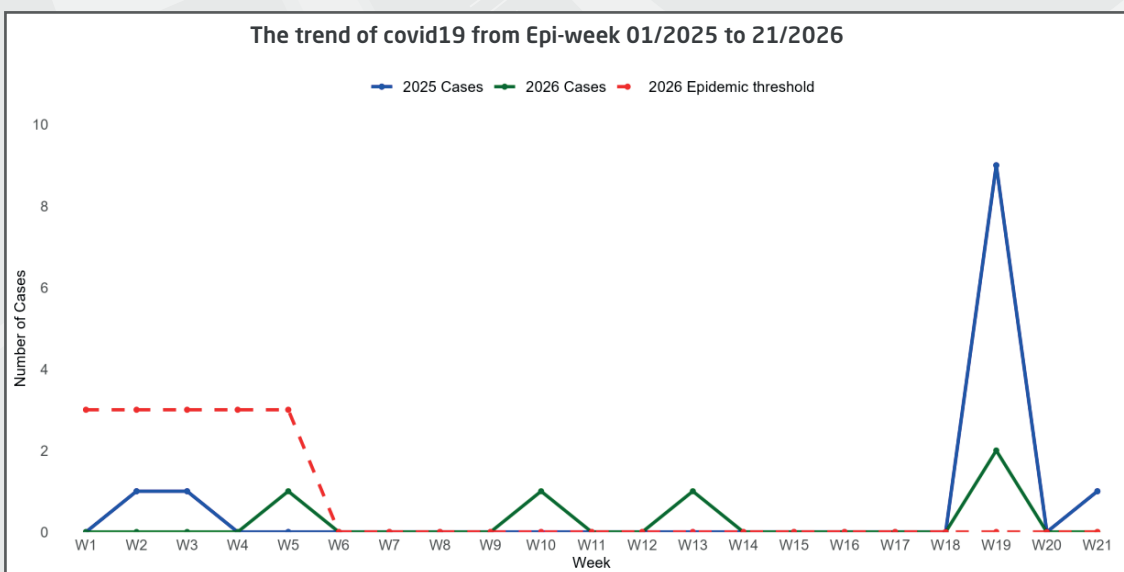
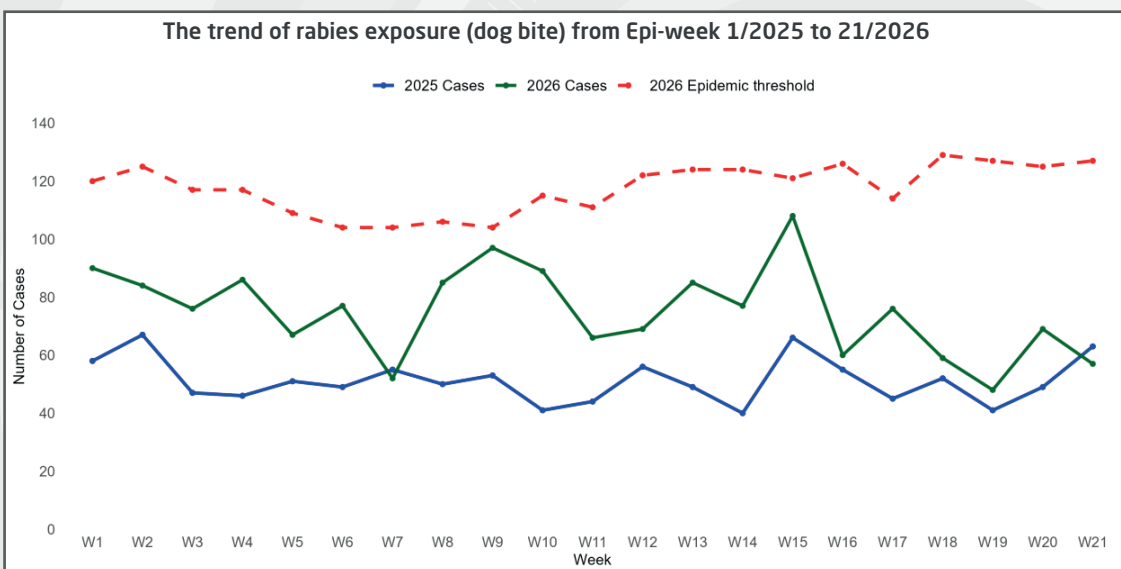
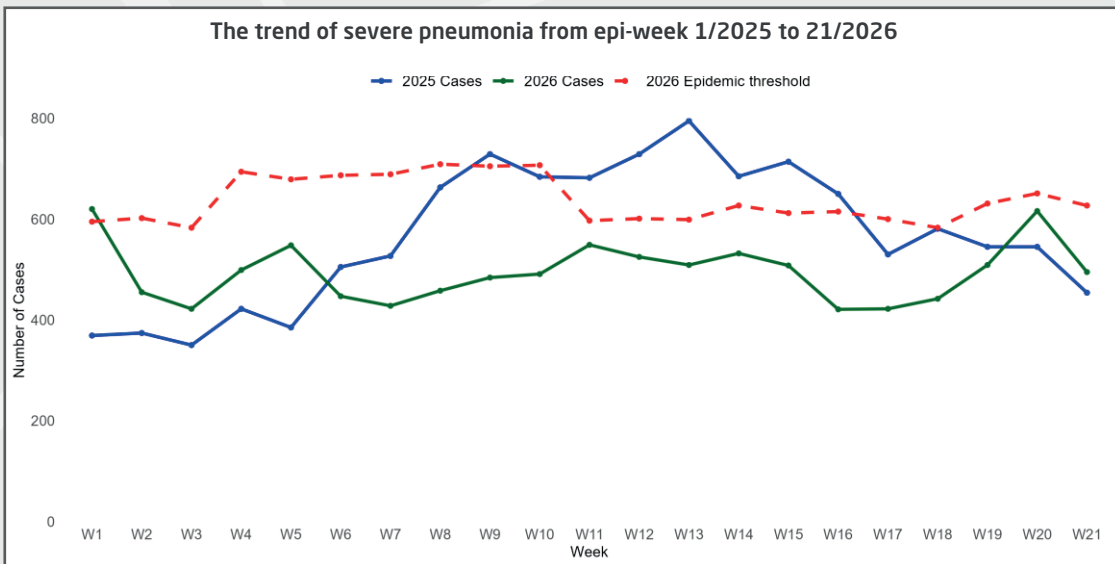
In Rwanda, after the adaptation of the IDSR guidelines 3rd edition, eight diseases events are being reported and analyzed on a weekly basis. These include flu syndrome, simple malaria, severe pneumonia for under 5 years, non-bloody diarrhea for under 5 years, COVID-19, dog bites, brucellosis, and trypanosomiasis. The monitoring trends of these weekly reportable diseases or health events helps to detect an unusual increase early.

In Epi Week 21, a thorough analysis was conducted, comparing the number of reported cases of the diseases monitored on a weekly basis to their respective epidemic thresholds. The results revealed that no disease cases surpassed the epidemic thresholds.

The figures below show the weekly reportable diseases trends:



The figures below show the weekly reportable diseases trends:



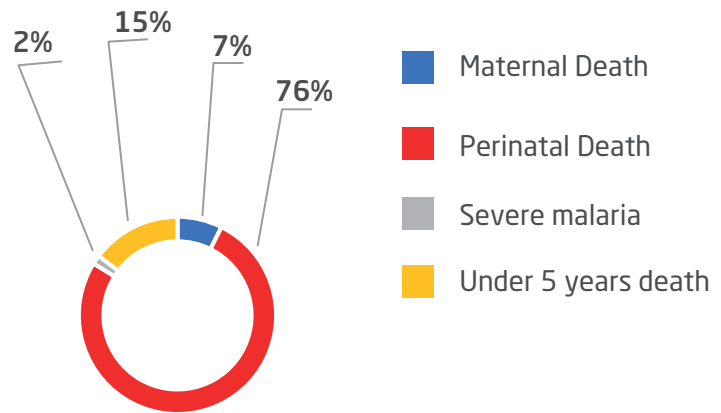


C. DISTRIBUTION OF REPORTED DEATHS IN eIDSR

As summarized in the Pie Chart below, a total of 68 deaths were reported through the electronic Integrated Disease Surveillance and Response (eIDSR) system. Among these deaths:

- 52 (76%) were perinatal deaths
- 10 (15%) were deaths of children under 5 years old
- 5 (7%) was maternal death
- 1 (1%) was a death due to severe malaria

Type of deaths reported in week 21/2026



Distribution of deaths by health facilities

68 deaths were reported from 25 health facilities as follows:



9 deaths were reported by Gisenyi DH (8 perinatal deaths, and 1 death under 5 years)



8 deaths were reported by Kibuye RH (1 maternal death, 6 perinatal deaths, and 1 death under 5 years)



6 deaths were reported by Rwinkwavu DH (6 perinatal deaths)



5 deaths were reported by Nyanza DH (3 perinatal deaths, and 2 deaths under 5 years)



4 deaths were each reported by:

- CHUK (2 perinatal deaths, and 2 deaths under 5 years)
- Nyagatare DH (4 perinatal deaths)



3 deaths were each reported by:

- Byumba DH, Gahini DH, and Kibilizi DH (3 perinatal deaths)
- Kabgayi DH, and Rwanda Military Hospital (1 maternal death, and 2 perinatal deaths)



2 deaths were each reported by:

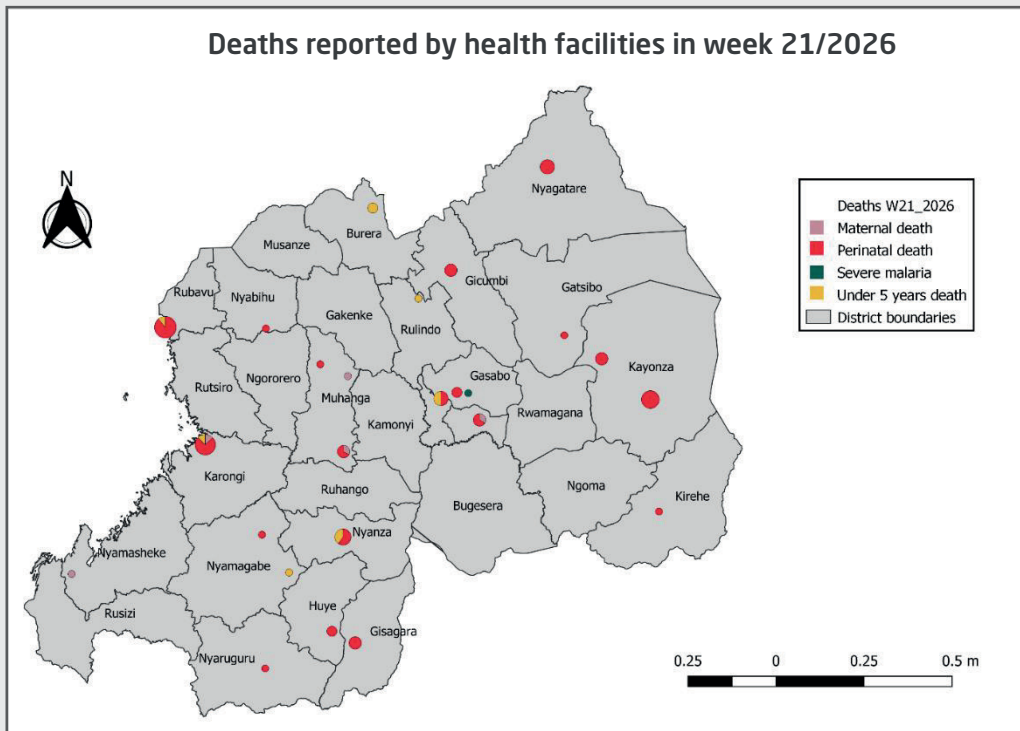
- CHUB, and Kacyiru police hospital (2 perinatal deaths),
- Butaro DH (2 deaths under 5 years)
- Kirehe DH (2 perinatal deaths and 1 death under 5 years)



1 death was each reported by:

- Nyabikenke DH, and Bushenge PH (1 maternal death)
- Kabaya DH, Kaduha DH, Kiziguro DH, Kirehe DH, Munini DH, and Gitega (Kibangu) HC in Nyabikenke DH (1perinatal death)
- Cyanika (Nyamagabe) HC in Kigeme HC, and Kinyihira PH (1death under 5 years)
- Kibagabaga DH (1 death due to severe malaria)

Distribution of deaths by health facilities:



OUTBREAK AND EVENT UPDATES IN EPIDEMIOLOGICAL WEEK 21

1. Ongoing outbreaks

1.1 Ongoing Mpox outbreak in Rwanda

Rwanda confirmed its first two cases of Mpox on July 24, 2024. The current situation, as of 24th May 2026, was as follows

8072	Cumulative suspected cases
7	New suspected cases
131	Total confirmed cases
0	New confirmed cases
0	Cases under follow up
0	New discharged case

Actions taken

In response to the Mpox outbreak, significant measures are being implemented at both central and district levels. The District Command Posts have been activated to bolster preparedness and improve response efforts. Key actions include:

- Door-to-door active case searches for early detection
- Heightened screening and surveillance in schools and public areas
- Screening at points of entry (POE)
- Ring vaccination
- Public awareness campaigns

1.2 Measles outbreaks in different provinces

1.2.1 Southern province

The current situation, as of 24th May 2026, was as follows:

Six affected districts were: **Nyanza, Nyaruguru, Gisagara, Ruhango, Huye, Kamonyi**

545	Cumulative suspected cases
72	New suspect cases
338	Total confirmed cases
15	New confirmed cases

1.2.2 Western province

Measles Outbreak in Rubavu district

The current situation since 10/12/2025; as of 24th May 2026, was as follows:

64	Cumulative suspect cases
2	New suspected cases
29	Confirmed cases (lab)
35	Confirmed cases (by epi link)

1.2.3 Eastern province

The current situation since 10/12/2025; as of 24th May 2026, was as follows:

The following five districts were affected with 91 active cases distributed as follows:

30	Nyagatare
23	Kayonza
15	Rwamagana
18	Bugesera
5	Gatsibo



Actions taken

- Isolation and follow-up of all confirmed cases
- IPC measures had been strengthened within the hospital to limit further spread of measles
- All health centers had been informed to strengthen surveillance and conduct active case search in the community in collaboration with CHWs.
- The situation had been closely monitored in collaboration with Nyanza DH.
- Vaccination



Actions taken

- Case management
- Active case searching
- Risk communication and community awareness



Actions taken

- Isolation and clinical management of identified cases
- Outbreak investigations had been carried out in these different areas affected
- Risk communication and community awareness
- Active case searching
- Vaccination

1.3 Cholera outbreak in Rusizi and Rubavu districts

The current situation of the ongoing Cholera outbreak in Rusizi and Rubavu districts, as of 24th May 2026, was as follows:

84	Cumulative suspected cases
28	New suspected cases
84	Total confirmed cases
31	New discharged cases
3	Cases under follow-up

1.3.2 Cholera in Rubavu district:

The current situation of the ongoing Cholera outbreak in Rusizi and Rubavu districts, as of 24th May 2026, was as follows:

30	Cumulative suspected cases
30	Confirmed cases
17	New discharged cases
0	Cases under follow-up

The outbreak of cholera in Rubavu district has been ended, as the last case was registered on 17/05/2026



Actions taken

- Case management of patients
- IPC measures applied
- Conducted a detailed case investigation
- Active case searching within the community, especially among close contacts and neighboring households
- Strengthened surveillance and reporting at community and health facility levels
- Performed risk communication and community sensitization on cholera prevention and early care-seeking
- Ensured availability of essential supplies (ORS, IV fluids, antibiotics, RDTs) at affected health facilities



Actions taken

- Case management
- The event was immediately notified through the e-IDSR system.
- Community sensitization on food safety and healthcare seeking behavior was conducted in collaboration with local leaders.
- Active case finding and community sensitization activities were conducted
- Further investigation continued surveillance were carried out

2. New outbreaks and events occurred

Suspected Foodborne Illness incident in Rutsiro district, Mushubati sector

On 22 May 2026, a suspected foodborne illness incident was reported in Cyahafi village, Cyarusera cell; Mushubati sector, Rutsiro district; following consumption of traditional sorghum beer ("ibigage") during a post-burial handwashing gathering in Cyahafi village, Cyarusera cell. A total of 15 cases presenting with vomiting, diarrhea, and abdominal pain were received at Mushubati HC including some severe cases requiring urgent medical attention. No deaths were reported. All affected patients received appropriate treatment including ORS, IV fluids, antibiotics, antiemetics, and pain management, 13 severe cases were referred to Murunda DH for further management.



eIDSR REPORTS COMPLETENESS & TIMELINESS

In Rwanda, eIDSR reports completeness and timeliness are scored as follows:

Greater or equal to 80%: High,

Between 60% and 79%: Moderate,

Less than 60%: Low.

In Epi Week 21, the overall completeness and timeliness of disease surveillance data reporting in Rwanda were 99% and 97%, respectively. All hospitals achieved high scores above 80% for completeness, while for the timeliness, two hospitals had a moderate score (Rwamagana PH and Muhima DH) and two hospitals had the low timeliness score (CARAES Ndera hospital and Kacyiru police hospital).

The hospitals, with moderate and low timeliness scores, had been advised to submit all required reports by Monday at 12:00.



Detailed completeness and timeliness performance for all health facilities is presented in the figures below.

Details on completeness and timeliness for all health facilities are shown in the figures below.

Completeness 2026																					
Hospital catchment area	W01	W02	W03	W04	W05	W06	W07	W08	W09	W10	W11	W12	W13	W14	W15	W16	W17	W18	W19	W20	W21
Nyagatare	100	93	100	100	100	100	100	93	100	100	100	100	100	100	100	93	93	100	100	86	93
Gatunda	100	100	100	100	100	100	100	100	100	100	100	100	100	100	100	100	100	100	100	100	100
Ngarama	100	100	100	100	100	100	100	100	100	100	100	100	100	100	100	100	100	100	100	100	100
Kiziguro	100	100	100	100	100	100	100	100	100	100	100	100	100	100	92	92	100	92	100	100	100
Gahini	75	88	100	88	100	100	100	100	88	100	100	100	100	100	100	88	100	100	88	100	100
Rwinkwavu	100	89	89	100	100	100	89	100	100	100	100	100	100	100	89	100	100	100	89	78	100
Kibungo	100	94	94	100	100	100	100	100	100	100	100	94	100	88	88	94	94	88	88	94	100
Kirehe	100	95	100	100	100	100	100	100	100	100	100	100	100	95	95	100	100	100	100	100	100
Rwamagana	100	100	100	89	89	94	94	100	94	94	89	94	89	89	89	94	100	94	89	94	83
Nyamata	100	100	100	100	100	100	100	100	100	100	100	100	94	88	94	94	100	94	100	94	100
Kinshira	100	100	100	100	100	100	100	100	100	100	100	100	89	100	89	89	100	100	100	100	100
Rutongo	100	100	100	100	100	100	100	100	100	100	100	100	100	100	93	100	100	100	100	93	100
Gatonde	100	100	100	100	100	100	100	100	100	100	100	100	100	100	100	100	100	100	100	100	100
Butaro	100	95	100	100	100	100	100	100	100	100	100	100	90	100	95	100	95	100	90	100	95
Ruli	100	100	100	100	100	100	100	100	100	100	100	100	100	100	100	100	100	89	100	100	100
Nemba	100	100	100	100	90	100	100	100	100	100	100	100	100	100	100	100	100	100	100	100	100
Ruhengeri	94	94	100	100	94	83	100	100	100	94	100	83	100	83	100	61	100	100	94	100	100
Byumba	100	92	100	96	100	100	100	96	100	100	96	100	100	96	100	100	100	100	100	100	100
CHUB	100	100	100	100	100	100	100	100	100	100	100	100	100	100	100	100	100	100	100	100	100
Kabutare	100	100	100	100	100	100	100	100	100	100	100	100	100	95	100	95	100	100	95	100	95
Kabgayi	100	100	100	100	100	100	100	100	100	100	100	100	100	100	100	100	100	100	100	100	100
Kibilizi	100	100	91	100	100	91	100	100	100	100	100	100	100	100	100	100	100	100	100	100	100
Gakoma	100	100	100	100	100	100	100	100	100	100	100	100	100	100	100	100	100	100	100	100	100
Gtwe	100	100	100	100	89	100	100	89	100	89	100	100	100	89	100	100	100	100	100	100	100
Ruhango	100	100	100	100	100	100	100	100	100	100	100	100	100	100	100	100	100	100	100	100	100
Remera Rukoma	100	100	100	100	100	100	100	100	93	100	100	100	100	100	100	100	100	100	100	100	100
Nyanza	100	100	100	100	100	95	95	100	100	100	100	95	100	95	100	100	100	100	84	95	100
Kigeme	100	100	100	100	100	100	100	100	100	100	92	100	100	100	100	100	100	100	100	100	92
Kaduha	100	100	100	100	100	100	100	100	90	100	100	100	100	100	100	100	100	100	100	100	100
Munini	100	100	100	100	100	100	100	100	100	100	100	100	100	100	100	100	100	100	100	100	100
Bushenge	100	100	100	100	100	100	100	100	100	100	100	100	100	100	100	100	100	100	100	100	100
Kibogora	100	100	100	100	100	100	100	100	100	100	100	100	100	100	100	100	100	100	93	100	100
Kibuye	100	100	100	100	100	100	100	100	100	100	92	100	100	100	100	100	100	100	100	100	100
Kirinda	100	100	100	100	100	100	100	100	100	100	100	100	100	100	100	100	100	100	100	100	100
Mugonero	100	100	100	100	100	100	100	100	100	100	100	100	100	100	100	100	100	100	100	100	100
Shyira	100	94	100	100	100	100	100	100	100	100	100	100	94	100	100	100	94	94	94	100	100
Muhororo	100	100	100	100	100	100	100	100	100	100	100	100	100	100	100	100	100	100	100	100	100
Kabaya	100	100	100	100	100	100	100	100	100	100	100	100	100	100	100	100	100	100	100	100	100
Ghundwe	90	100	100	100	100	100	100	100	100	100	100	100	100	100	100	100	100	100	90	100	100
Mibilizi	100	100	100	100	100	100	100	100	100	100	100	100	100	100	100	100	100	100	100	100	100
Gsenyi	100	94	100	100	100	100	100	100	100	100	100	100	100	94	100	100	100	100	100	100	100
Murunda	100	100	100	100	100	100	100	100	95	100	100	100	100	95	100	100	100	100	100	100	100
CHUK	100	100	100	100	100	100	100	100	100	100	100	100	100	100	100	100	100	100	100	100	100
Nyarugenge	89	100	100	100	100	100	100	100	100	100	100	100	100	100	100	100	100	100	100	100	100
Muhima	100	100	75	100	100	100	100	100	100	100	100	100	75	75	100	100	100	100	100	100	100
RMH	100	100	100	100	100	100	100	100	100	100	100	100	100	100	100	100	100	100	100	100	100
Masaka	100	100	100	100	100	100	100	100	100	100	100	100	100	100	100	100	100	100	100	100	100
Kigababaga	100	100	100	95	100	100	100	100	100	95	95	95	95	80	100	95	95	95	100	100	100
Kacyiru	100	100	100	100	100	100	100	100	100	100	100	100	100	100	100	100	100	100	100	100	100
KFH	100	100	100	0	100	100	100	100	100	0	0	0	100	0	100	0	100	100	100	100	100
Carass Ndera	100	100	100	100	100	100	100	100	100	100	100	100	100	0	100	100	100	100	100	100	100
Nyabikenke	100	100	100	100	100	100	100	100	100	100	100	100	100	100	100	100	100	100	100	100	100
Rwanda(Average)	99	99	99	98	99	99	99	100	99	98	97	99	99	96	99	96	99	99	97	99	99

Details on completeness and timeliness for all health facilities are shown in the figures below.

Timeliness 2026																					
Hospital catchment area	W01	W02	W03	W04	W05	W06	W07	W08	W09	W10	W11	W12	W13	W14	W15	W16	W17	W18	W19	W20	W21
Nyagatare	93	86	100	93	86	100	100	93	100	100	100	100	100	100	100	86	93	100	100	86	93
Gatunda	100	100	89	100	100	100	89	100	100	100	100	100	100	89	100	100	100	100	100	100	100
Ngarara	100	88	100	100	100	100	100	100	100	100	100	100	100	100	100	100	100	100	100	100	100
Kiziguro	100	100	100	100	100	100	100	100	100	100	100	100	92	100	92	92	100	92	100	100	100
Gahini	75	88	100	88	88	75	88	100	75	100	100	100	88	63	88	88	100	100	88	100	100
Rwinkwavu	89	89	89	100	78	100	89	78	100	100	78	89	100	78	78	100	100	100	89	78	100
Kibungo	100	94	94	100	100	100	100	100	100	100	100	94	94	88	88	94	94	82	88	88	94
Kirehe	100	95	100	100	100	90	100	100	100	100	100	100	100	95	95	100	100	100	100	100	100
Rwamagana	100	100	100	83	83	89	94	100	89	94	100	94	72	89	89	94	94	83	89	94	78
Nyamata	100	100	100	94	100	100	100	100	100	100	100	100	82	71	76	94	100	76	94	88	100
Kinshira	100	100	100	100	100	100	100	100	100	100	100	100	89	89	100	89	100	100	89	100	100
Rutongo	100	100	100	100	93	100	100	100	100	100	93	100	100	100	89	100	93	100	100	87	93
Gatonde	100	100	100	100	100	100	100	100	100	100	100	100	100	100	100	100	100	100	100	100	100
Butaro	95	90	100	100	90	100	85	100	95	100	90	95	85	95	95	95	90	95	90	95	90
Ruli	100	100	100	100	100	100	100	100	100	100	100	100	89	89	100	100	100	89	100	100	100
Nemba	100	90	100	100	80	100	100	100	100	100	100	100	100	90	90	100	100	90	100	100	100
Ruhengeri	94	94	100	100	94	83	100	94	83	94	100	83	83	78	100	56	94	94	94	100	94
Byumba	100	88	100	96	96	96	100	96	100	100	96	100	96	92	100	100	92	100	96	96	100
CHUB	100	100	100	100	100	100	100	100	100	100	100	100	100	100	100	100	100	100	100	100	100
Kabutare	100	100	100	100	100	100	100	100	95	100	100	100	100	95	93	95	100	100	89	95	89
Kabgayi	100	100	100	100	100	100	100	100	100	100	100	92	100	100	100	100	100	100	92	100	100
Kibilizi	100	100	91	100	100	91	100	100	100	100	91	100	100	100	100	100	100	100	100	100	100
Gakoma	100	100	100	100	100	83	100	100	100	100	100	100	100	100	100	100	100	100	100	100	100
Gtwe	100	100	100	100	78	89	100	89	100	89	100	100	100	56	94	56	100	89	100	100	100
Ruhango	100	100	100	100	100	100	100	100	100	100	100	100	100	100	94	100	100	100	100	100	100
Remera Rukoma	93	100	93	93	100	100	100	100	93	100	100	87	100	80	100	100	100	100	100	100	100
Nyanza	100	100	100	95	89	95	95	100	100	100	95	95	100	89	100	95	95	95	79	95	100
Kigeme	100	100	100	100	92	100	100	92	100	100	85	100	100	92	100	100	100	100	92	100	92
Kaduha	100	90	100	100	100	100	100	90	90	100	100	100	100	100	100	100	70	100	100	100	100
Munini	100	100	88	100	100	100	100	100	100	100	94	100	100	94	100	95	100	100	100	100	100
Bushenge	100	88	100	100	100	100	100	100	100	100	100	100	100	100	100	100	100	100	100	88	100
Kibogora	100	100	93	100	100	100	100	100	100	100	100	100	100	86	100	100	100	100	93	100	100
Kibuye	100	100	100	100	100	100	92	100	92	100	92	100	100	100	90	100	100	100	100	100	100
Kirinda	100	100	83	100	100	100	100	100	100	100	100	100	100	100	100	100	100	100	100	100	100
Mugonero	100	100	86	100	100	100	100	100	100	100	100	100	100	100	100	100	100	100	100	100	100
Shyira	100	94	100	100	100	94	100	100	94	100	100	100	94	100	100	100	94	94	94	100	94
Muhororo	100	100	100	100	100	90	100	100	100	100	100	100	100	100	100	100	100	100	100	100	90
Kabaya	100	100	100	100	100	100	100	100	100	100	100	100	100	100	100	100	100	100	100	100	100
Ghundwe	90	90	100	90	70	100	100	100	100	100	100	100	100	100	95	95	100	100	90	100	100
Mibilizi	100	100	92	100	100	100	100	100	100	100	100	100	100	100	100	100	100	100	100	100	92
Gsenyi	100	94	100	100	100	100	100	100	100	100	100	100	100	94	93	100	94	100	100	100	94
Murunda	100	100	84	100	100	95	100	100	95	100	95	100	95	95	100	100	95	100	100	100	100
CHUK	100	100	100	100	100	100	100	100	100	100	100	100	100	100	100	100	100	100	100	100	100
Nyarugenge	89	100	100	100	100	100	100	100	89	100	100	100	100	100	100	100	100	100	100	100	100
Muhima	100	100	75	100	100	100	100	100	100	100	100	100	75	75	100	100	100	100	75	100	75
RMH	0	100	100	100	100	100	100	100	100	100	100	100	100	100	100	100	100	100	100	100	100
Masaka	92	100	100	100	100	100	100	100	100	100	100	100	100	100	100	100	100	100	100	100	100
Kigababaga	100	100	95	95	80	100	95	100	100	95	95	95	95	80	100	90	95	95	90	95	90
Kacyiru	100	100	100	100	0	100	100	100	100	100	100	100	100	100	100	100	100	100	100	100	0
KFH	100	100	100	0	0	100	0	100	100	0	0	0	100	0	100	0	100	100	0	100	100
Caras Ndera	100	100	100	100	0	100	100	100	100	100	100	100	100	0	0	100	100	100	0	0	0
Nyabikenke	100	100	100	100	100	100	100	100	100	100	100	100	100	100	100	100	100	100	100	100	100
Rwanda(Average)	98	97	97	97	95	98	98	99	98	98	98	98	97	92	95	95	98	98	96	96	97