



Republic of Rwanda
Ministry of Health



WEEKLY EPIDEMIOLOGICAL BULLETIN

WEEK **22** 25-31 May 2026





Editorial message

Effective and efficient disease surveillance systems contribute to the reduction of morbidity, disability and mortality from disease outbreaks and health emergencies.

This weekly bulletin presents the epidemiological status of the priority diseases, conditions, and public-health events under surveillance in Rwanda. These data aim to trigger a rapid response for rapid impact, actions and results oriented, a proactive preparedness, risk mitigation and prevention, intelligence, real-time information, and communication for decision making.

KEY EPIDEMIOLOGICAL HIGHLIGHTS



Event Based Surveillance (EBS) Highlights:



Alerts from Impuruza system: **12** alerts



9 human deaths



3 dog bites

Alerts from EIOS: **5** alerts

Ebola outbreak threatens food security in DRC

Doctors warn Ebola outbreak is "out of control" in DRC

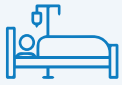
Uganda strengthens border measures following Ebola outbreak

Bangladesh reports additional measles deaths among children

Suspected Ebola cases under investigation in Brazil



Indicator Based Surveillance (IBS) Highlights:



567 cases of immediately reportable diseases were notified by **130** health facilities nationwide. These included cases of chicken pox, severe malaria, suspected shigellosis, suspected measles/rubella, suspected Mpox, suspected foodborne illnesses, acute flaccid paralysis, suspected cholera, suspected human influenza, suspected VHF, suspected RVF, Mumps, and snake bites.



64 deaths were reported by **20** health facilities through the electronic Integrated Disease Surveillance and Response (eIDSR) system. Most deaths were perinatal deaths and deaths of children under 5 years.



Outbreaks and events updates in week 22



Weekly updates on ongoing outbreaks:

Ongoing outbreaks:

- ⚠️ Mpox outbreak
- ⚠️ Measles outbreaks in different districts of Rwanda
- ⚠️ Cholera outbreak in Rusizi district

New outbreak:

- ⚠️ None



Completeness and timeliness



In Epi Week 22, the overall completeness and timeliness of surveillance data reporting in Rwanda were 98% and 97%, respectively.



Weekly updates on Event Based Surveillance (EBS)

Description: Event-Based Surveillance (EBS) is a type of public health surveillance system that detects and reports unusual health events or disease outbreaks in a timely manner. The system is designed to detect signals of potential public health threats and allow a rapid response to prevent or control the spread of diseases. RBC is implementing EBS through the PHS&EPR Division.

Currently, an electronic Community Event-Based Surveillance System (eCBS), Hotline and Epidemic Intelligence from Open Source (EIOS) are being used to detect and report events of public health importance from the community and media. The process for the establishment of other types of EBS is still ongoing.

Alerts from Impuruza system: 12 signals
12 signals were received from the community. They included 9 human deaths in the community and 3 dog bites.

Alerts from EIOS: 5 alerts

1. Ebola outbreak threatens food security in DRC

The Ebola outbreak in eastern Democratic Republic of Congo, particularly in Ituri province, is worsening an already severe food insecurity crisis affecting about 26.5 million people. The Bundibugyo Ebola strain, for which no approved vaccine or treatment currently exists, has contributed to rising humanitarian concerns, with over 750 suspected cases and 177 deaths reported by 22 May. The World Food Programme (WFP) warned that insecurity, population displacement, and limited humanitarian access may further worsen hunger, especially in eastern provinces where about 10 million people face severe food shortages. WFP is supporting outbreak response through transport of medical teams, supplies, and food assistance while calling for more funding to support vulnerable communities.

<https://www.angop.ao/noticias/africa/surto-de-ebola-ameaca-intensificar-inseguranca-alimentar-na-rd-congo/>

2. Doctors warn Ebola outbreak is “out of control” in DRC

Doctors working at the center of the Ebola outbreak in eastern DRC described the situation as rapidly worsening and difficult to control. More than 1,000 suspected Ebola cases and over 230 suspected deaths linked to the Bundibugyo strain have been reported, while neighboring Uganda confirmed seven cases. Health workers reported community mistrust, resistance to response measures, attacks on healthcare facilities, and escape of suspected patients from hospitals, all of which are accelerating transmission. Limited laboratory capacity, shortages of protective equipment, and insecurity are further undermining response efforts. Clinicians emphasized the urgent need for international support, more trained personnel, and strengthened outbreak control interventions.

<https://abc7chicago.com/post/doctors-front-line-ebola-outbreak-democratic-republic-congo-speak/19187557/>

3. Uganda strengthens border measures following Ebola outbreak

Uganda announced temporary closure of land borders with the Democratic Republic of Congo to limit spread of the Ebola outbreak. The government also imposed a 21-day quarantine for arrivals from DRC, while allowing limited exceptions for Ebola response teams, humanitarian workers, and transport of food and essential goods under strict health screening. Authorities mandated media outlets to broadcast daily public awareness messages about Ebola prevention. Uganda has confirmed seven Bundibugyo Ebola cases since the outbreak began in neighboring Ituri province on 15 May. WHO has issued international health alerts, warning that reported figures may underestimate the true outbreak burden.

<https://gphin.canada.ca/cepr/showarticle.jsp?docId=1021637340>





Weekly updates on Event Based Surveillance (EBS)

4. Bangladesh reports additional measles deaths among children

Bangladesh reported five additional child deaths linked to suspected measles within 24 hours, alongside 51 newly confirmed infections nationwide. Since March 15, authorities reported 88 confirmed measles deaths and 477 deaths linked to suspected cases. Dhaka has been the hardest-hit area, accounting for the highest number of fatalities and hospital admissions. More than 67,900 suspected measles cases and 8,885 confirmed infections have been reported nationally. Hospitals continue to face high patient volumes, with hundreds of symptomatic children seeking care daily.

<https://thefinancialexpress.com.bd/health/bangladesh-reports-five-child-deaths-with-suspected-measles-51-new-cases>

5. Suspected Ebola cases under investigation in Brazil

Two men from the Democratic Republic of Congo (DRC) and Uganda with symptoms compatible with Ebola were isolated in Brazil for investigation. A 37-year-old man in São Paulo presented with fever and was admitted to the Emilio Ribas Institute under isolation protocols. Initial tests suggested severe meningitis, but Ebola testing remains ongoing. Another traveler in Rio de Janeiro who arrived from Uganda tested positive for malaria but is still under Ebola investigation. Brazilian authorities activated the national contingency plan for viral hemorrhagic fevers and assessed the risk of Ebola introduction into Brazil and South America as low. Health services were advised to intensify surveillance for travelers with fever and recent travel history to affected countries.

<https://www.ouest-france.fr/sante/virus-ebola/ebola-deux-hommes-places-a-lisolement-au-bresil-77391ad8-5d16-11f1-b3f0-aacb0ffa8bfbR>



WEEKLY UPDATES ON EVENT-BASED SURVEILLANCE (EBS)

Description: Rwanda had implemented Indicator-Based Surveillance according to the IDSR guidelines 3rd edition where 45 priority diseases, health conditions, and public health events are being monitored and reported from health facilities countrywide on a regular basis.

. Diseases that are prone to outbreaks are reported immediately within 24 hours after detection, while diseases that are considered endemic are reported on a weekly basis every Monday before midday.

A. IMMEDIATE REPORTABLE DISEASES - EPI WEEK 22

During this Epi week,

567 cases of immediately reportable diseases were notified by 130 health facilities:



21 cases of chicken pox (varicella) were reported by 9 health facilities.



451 suspected cases of Measles/Rubella were reported by 103 health facilities (they are described in the update on the



8 cases of severe malaria were reported by 8 health facilities.



5 suspected cases of Mpox were reported by 5 health facilities; the samples were tested, and they were negative.



25 cases of suspected foodborne illnesses were reported by 2 health facilities



7 snake bite cases were reported by 4 health facilities.



1 case of acute flaccid paralysis was reported by 1 health facility



3 suspected cases of shigellosis were reported by 2 health facilities; the samples were taken and sent to the laboratory



23 suspected cases of cholera were reported by 5 health facilities



1 suspected case of human influenza was reported by 1 health facility; the sample was taken and sent to the laboratory



13 suspected cases of VHF were reported by 9 health facilities; the samples were taken and sent to the laboratory

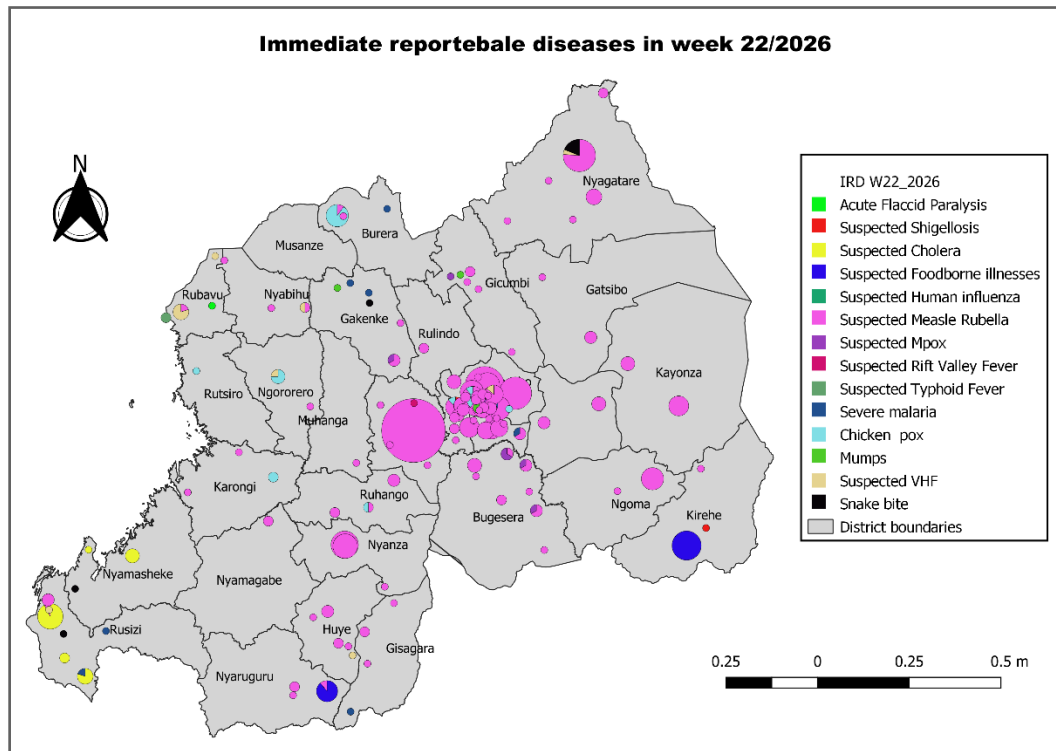


1 suspected case of RVF was reported by 1 health facility; the sample was taken and sent to the laboratory



4 cases of mumps were reported by 3 health facilities

Geographical distribution of immediate reportable disease cases notified during the epi week 22/2026

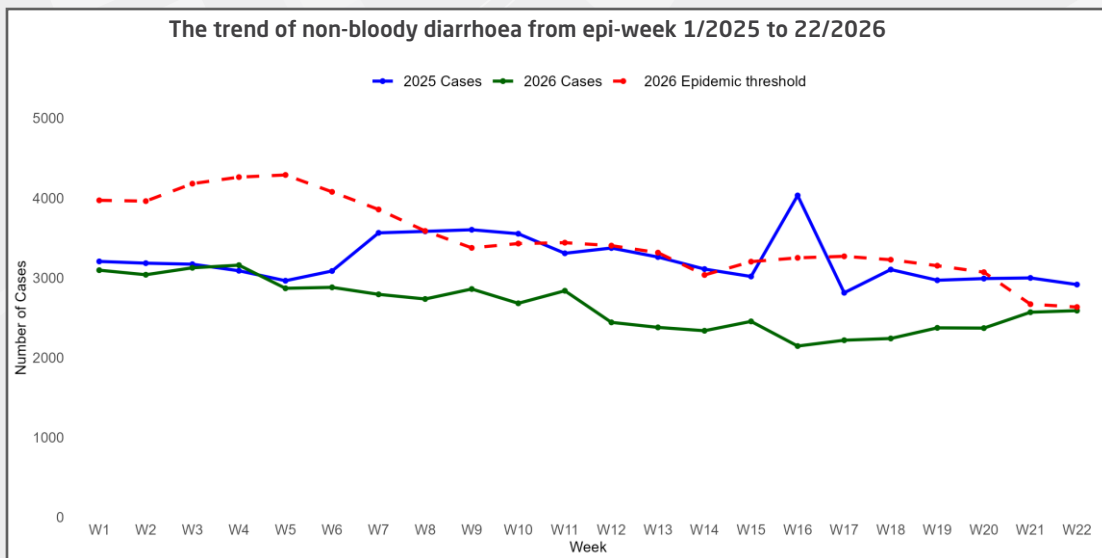
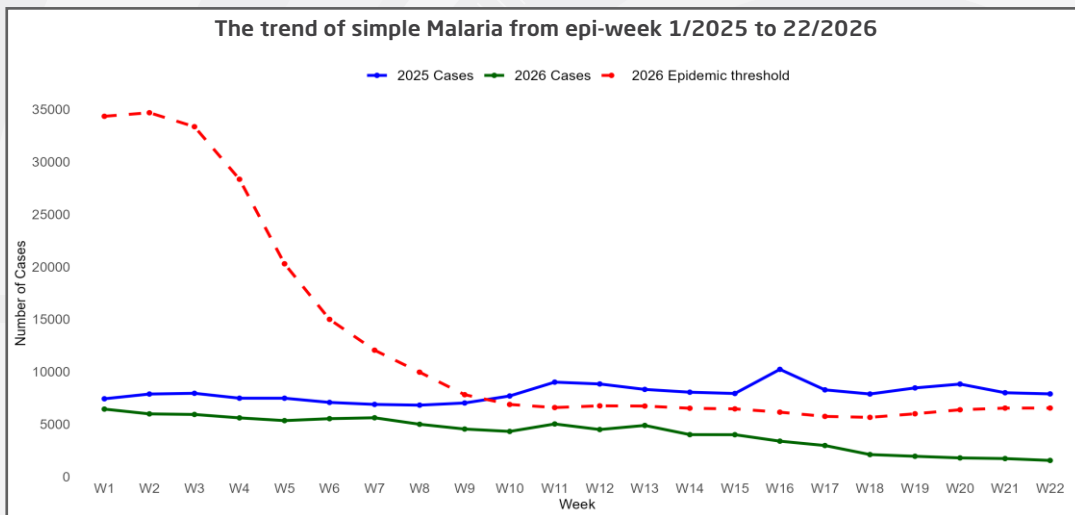
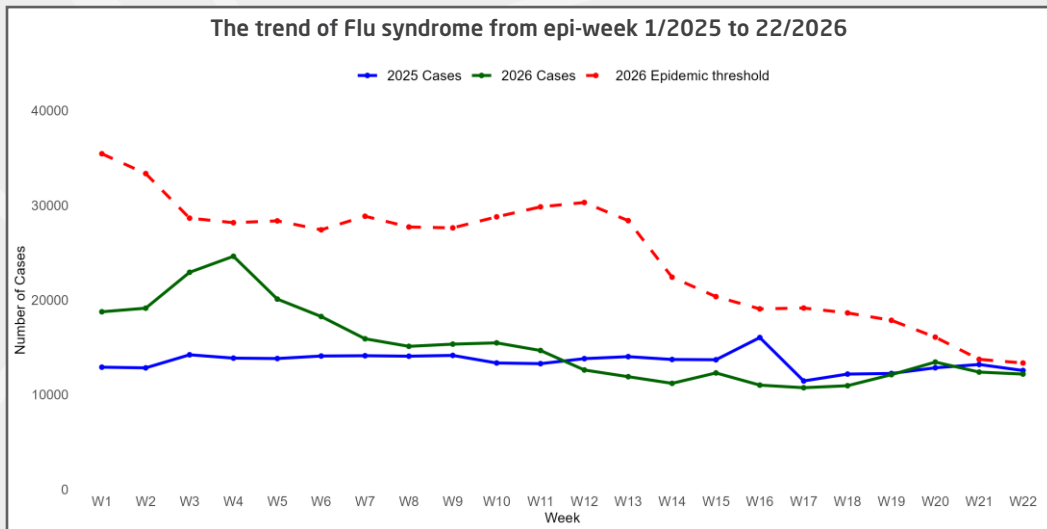


B. WEEKLY REPORTABLE DISEASES - EPI WEEK 22

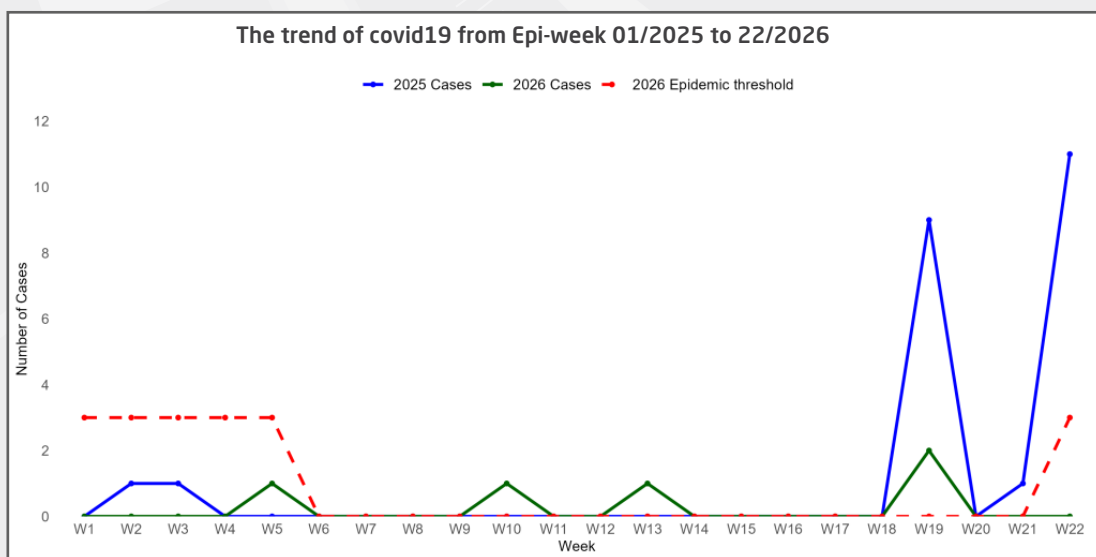
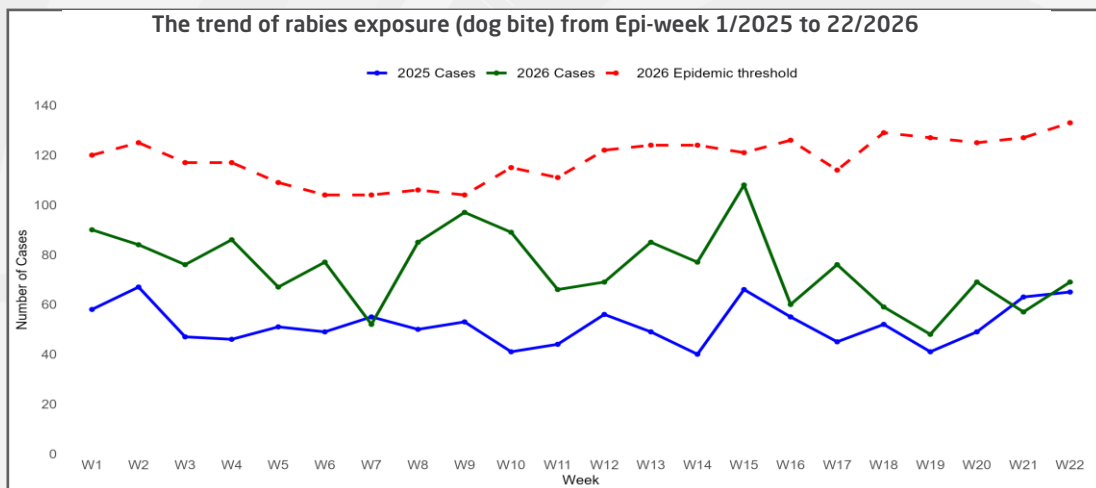
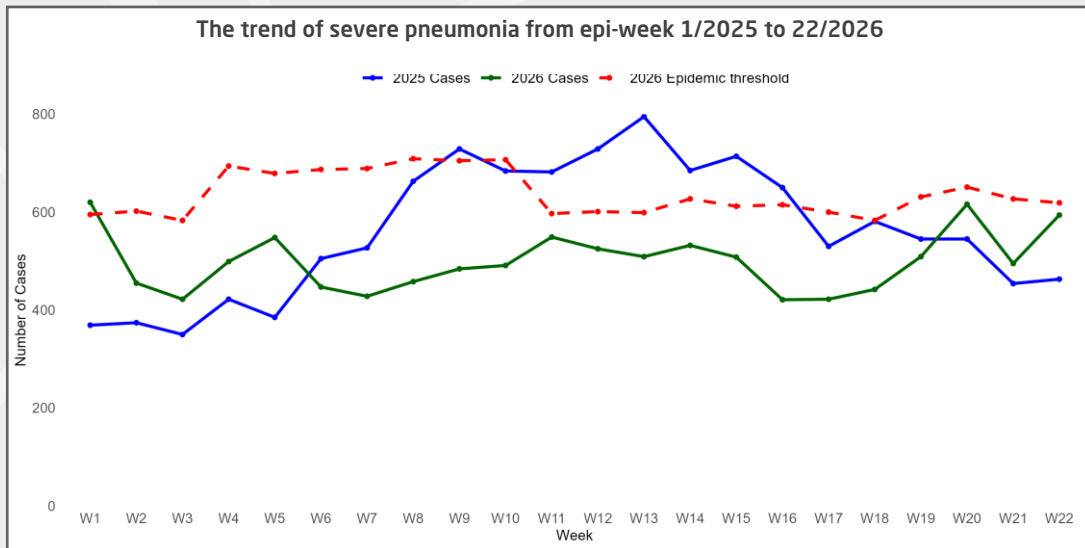
In Rwanda, after the adaptation of the IDSR guidelines 3rd edition, eight diseases events are being reported and analyzed on a weekly basis. These include flu syndrome, simple malaria, severe pneumonia for under 5 years, non-bloody diarrhea for under 5 years, COVID-19, dog bites, brucellosis, and trypanosomiasis. The monitoring trends of these weekly reportable diseases or health events helps to detect an unusual increase early.

In Epi Week 22, a thorough analysis was conducted, comparing the number of reported cases of the diseases monitored on a weekly basis to their respective epidemic thresholds. The results revealed that no disease cases surpassed the epidemic thresholds.

The figures below show the weekly reportable diseases trends:



The figures below show the weekly reportable diseases trends:



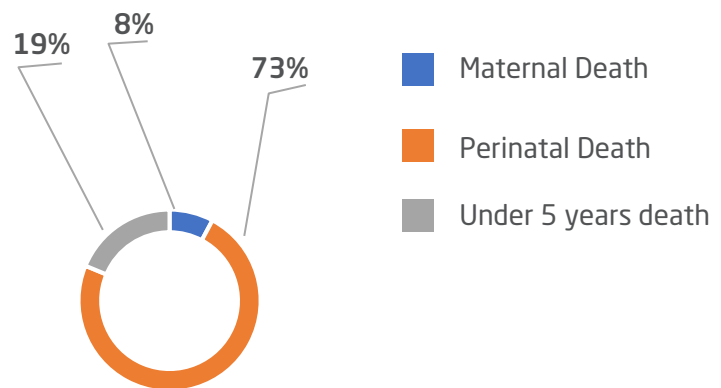


C. DISTRIBUTION OF REPORTED DEATHS IN eIDSR

As summarized in the Pie Chart below, a total of 64 deaths were reported through the electronic Integrated Disease Surveillance and Response (eIDSR) system. Among these deaths:

- 47 (73%) were perinatal deaths
- 12 (19%) were deaths of children under 5 years old
- 5 (8%) were maternal deaths

Type of deaths reported in week 22/2026



Distribution of deaths by health facilities

64 deaths were reported from 20 health facilities as follows:



12 deaths were reported by Gisenyi DH (1 maternal death, 10 perinatal deaths, and 1 death under 5 years)



8 deaths were each reported by:

- Byumba DH (7 perinatal deaths, and 1 death under 5 years)
- Nyagatare DH (8 perinatal deaths)



4 deaths were each reported by:

- CHUB (3 perinatal deaths, and 1 death under 5 years)
- Ruhengeri RH (1 maternal death, and 3 deaths under 5 years)



3 deaths were each reported by:

- Kirehe DH, and Murunda DH (3 perinatal deaths)
- Nyamata DH (3 deaths under 5 years)



2 deaths were each reported by:

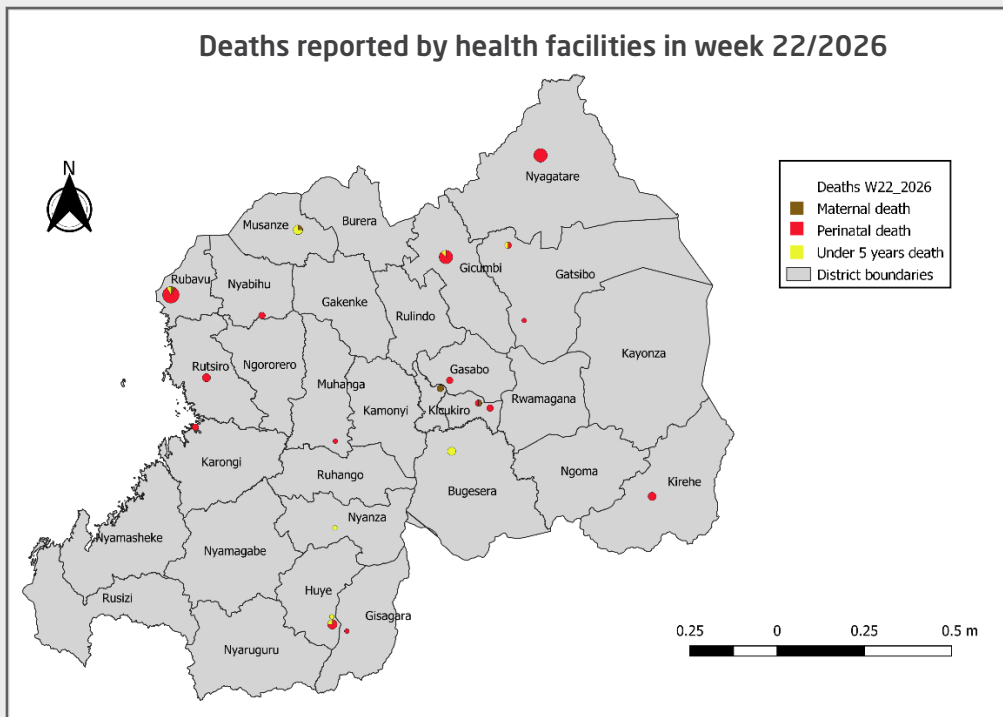
- Kabaya DH, Kibuye RH, Kacyiru police hospital, and Masaka DH (2 perinatal deaths),
- Muhima DH (2 maternal deaths)
- Ngarama DH (1 perinatal death and 1 death under 5 years)
- Rwanda Military Hospital (1 maternal death, and 1 perinatal death)



1 death was each reported by:

- Kabgayi DH, Kibilizi DH and Muhura HC in Kiziguro DH (1 perinatal death)
- Kabutare DH, and Nyanza DH (1 death under 5 years)

Distribution of deaths by health facilities:



OUTBREAK AND EVENT UPDATES IN EPIDEMIOLOGICAL WEEK 22

1. Ongoing outbreaks

1.1 Ongoing Mpox outbreak in Rwanda

Rwanda confirmed its first two cases of Mpox on July 24, 2024. The current situation, as of 31st May 2026, was as follows:

8077	Cumulative suspected cases
5	New suspected cases
131	Total confirmed cases
0	New confirmed cases
0	Cases under follow up
0	New discharged case

Actions taken

In response to the Mpox outbreak, significant measures are being implemented at both central and district levels. The District Command Posts have been activated to bolster preparedness and improve response efforts. Key actions include:

- Door-to-door active case searches for early detection
- Heightened screening and surveillance in schools and public areas
- Screening at points of entry (POE)
- Ring vaccination
- Public awareness campaigns

1.2 Measles outbreaks in different provinces

1.2.1 Southern Province

The current situation, as of 31st May 2026, was as follows:

Six affected districts were: **Nyanza, Nyaruguru, Gisagara, Ruhango, Huye, Kamonyi**

592 Cumulative suspected cases

48 New suspect cases

371 Total confirmed cases

15 New confirmed cases

1.2.2 Western province

Measles Outbreak in Rubavu district

The current situation since 10/12/2025; as of 31st May 2026, was as follows:

65 Cumulative suspect cases

1 New suspected cases

29 Confirmed cases (lab)

35 Confirmed cases (by epi link)

1.2.3 Eastern province

The current situation since 10/12/2025; as of 31st May 2026, was as follows:

The following five districts were affected with 53 active cases distributed as follows:

19 Nyagatare

13 Kayonza

5 Rwamagana

10 Bugesera

6 Gatsibo

1.2.4 City of Kigali

126 active cases in Gasabo, Kicukiro and Nyarugenge districts



Actions taken

- Isolation and clinical management of identified cases
- Outbreak investigations had been carried out in these different areas affected
- Risk communication and community awareness
- Active case searching
- Vaccination

1.3 Cholera outbreak in Rusizi districts

The current situation of the ongoing Cholera outbreak in Rusizi district, as of 31st May 2026, was as follows:

103	Cumulative suspected cases
19	New suspected cases
103	Total confirmed cases
13	New discharged cases
6	Cases under follow-up



Actions taken

- Case management of patients
- IPC measures applied
- Conducted a detailed case investigation
- Active case searching within the community, especially among close contacts and neighboring households
- Strengthened surveillance and reporting at community and health facility levels
- Performed risk communication and community sensitization on cholera prevention and early care-seeking
- Ensured availability of essential supplies (ORS, IV fluids, antibiotics, RDTs) at affected health facilities

2. New outbreaks and events occurred

No new outbreak occurred in week 22/2026

3. Updates on Ebola Virus Disease outbreak preparedness in Rwanda

The activities related to the preparedness to respond to a possible Ebola outbreak in Western and Northern provinces that remained ongoing, as the Ebola Virus Disease (EVD) outbreak is currently ongoing in the neighboring countries of DRC and Uganda. In Northern Province, the PHEOC is operating in Alert mode, EVD preparedness activities were intensified during Epidemiological Week 22, with PHEOC staff deployed at the Points of Entry (PoE) of Cyanika and Gatuna, as well as in the catchment areas of Byumba and Butaro Level 2 Teaching Hospital (L2TH). Enhanced border surveillance and vigilance were being maintained.

In Western Province, the PHEOC was also operating in Alert mode through two functioning provincial Ebola command posts currently activated and sitting in Rubavu and Rusizi districts since week 21 (from 17/05/2026).



eIDSR REPORTS COMPLETENESS & TIMELINESS

In Rwanda, eIDSR reports completeness and timeliness are scored as follows:

Greater or equal to 80%: High,

Between 60% and 79%: Moderate,

Less than 60%: Low.

In Epi Week 22, the overall completeness and timeliness of disease surveillance data reporting in Rwanda were 98% and 97%, respectively. All hospitals achieved high scores above 80% for completeness, while for the timeliness, one hospital had a moderate score (Rwinkwavu DH) and one hospital had the low timeliness score (CARAES Ndera hospital).

The hospitals, with moderate and low timeliness scores, had been advised to submit all required reports by Monday at 12:00.



Detailed completeness and timeliness performance for all health facilities is presented in the figures below.

Details on completeness and timeliness for all health facilities are shown in the figures below.

Completeness 2026																						
Hospital catchment area	W01	W02	W03	W04	W05	W06	W07	W08	W09	W10	W11	W12	W13	W14	W15	W16	W17	W18	W19	W20	W21	W22
Nyagatare	100	93	100	100	100	100	100	93	100	100	100	100	100	100	100	93	93	100	100	86	93	100
Gatunda	100	100	100	100	100	100	100	100	100	100	100	100	100	100	100	100	100	100	100	100	100	100
Ngarara	100	100	100	100	100	100	100	100	100	100	100	100	100	100	100	100	100	100	100	100	100	100
Kiziguro	100	100	100	100	100	100	100	100	100	100	100	100	100	100	92	92	100	92	100	100	100	100
Gahini	75	88	100	88	100	100	100	100	88	100	100	100	100	100	100	88	100	100	88	100	100	100
Rwinkwavu	100	89	89	100	100	100	89	100	100	100	100	100	100	100	89	100	100	100	89	78	100	89
Kibungo	100	94	94	100	100	100	100	100	100	100	100	94	100	88	88	94	94	88	88	94	100	100
Kirehe	100	95	100	100	100	100	100	100	100	100	100	100	100	95	95	100	100	100	100	100	100	100
Rvamagana	100	100	100	89	89	94	94	100	94	94	89	94	89	89	89	94	100	94	89	94	83	89
Nyamata	100	100	100	100	100	100	100	100	100	100	100	100	94	88	94	94	100	94	100	94	100	88
Kirihira	100	100	100	100	100	100	100	100	100	100	100	100	89	100	89	89	100	100	100	100	100	89
Rutongo	100	100	100	100	100	100	100	100	100	100	100	100	100	100	93	100	100	100	100	93	100	100
Gatonde	100	100	100	100	100	100	100	100	100	100	100	100	100	100	100	100	100	100	100	100	100	100
Butaro	100	95	100	100	100	100	100	100	100	100	100	100	90	100	95	100	95	100	90	100	95	90
Ruli	100	100	100	100	100	100	100	100	100	100	100	100	100	100	100	100	100	89	100	100	100	89
Nemba	100	100	100	100	90	100	100	100	100	100	100	100	100	100	100	100	100	100	100	100	100	100
Ruhengeri	94	94	100	100	94	83	100	100	100	94	100	83	100	83	100	61	100	100	94	100	100	100
Byumba	100	92	100	96	100	100	100	96	100	100	96	100	100	96	100	100	100	100	100	100	100	100
CHUB	100	100	100	100	100	100	100	100	100	100	100	100	100	100	100	100	100	100	100	100	100	100
Kabutare	100	100	100	100	100	100	100	100	100	100	100	100	100	95	100	95	100	100	95	100	95	95
Kabgayi	100	100	100	100	100	100	100	100	100	100	100	100	100	100	100	100	100	100	100	100	100	100
Kibilizi	100	100	91	100	100	91	100	100	100	100	100	100	100	100	100	100	100	100	100	100	100	100
Gakoma	100	100	100	100	100	100	100	100	100	100	100	100	100	100	100	100	100	100	100	100	100	100
Gtwe	100	100	100	100	89	100	100	89	100	89	100	100	100	89	100	100	100	100	100	100	100	100
Ruhango	100	100	100	100	100	100	100	100	100	100	100	100	100	100	100	100	100	100	100	100	100	100
Ramera Rukoma	100	100	100	100	100	100	100	100	93	100	100	100	100	100	100	100	100	100	100	100	100	100
Nyanza	100	100	100	100	100	95	95	100	100	100	100	95	100	95	100	100	100	100	84	95	100	95
Kigame	100	100	100	100	100	100	100	100	100	100	92	100	100	100	100	100	100	100	100	100	92	100
Kaduha	100	100	100	100	100	100	100	100	90	100	100	100	100	100	100	100	100	100	100	100	100	90
Munini	100	100	100	100	100	100	100	100	100	100	100	100	100	100	100	100	100	100	100	100	100	100
Bushenge	100	100	100	100	100	100	100	100	100	100	100	100	100	100	100	100	100	100	100	100	100	100
Kibogora	100	100	100	100	100	100	100	100	100	100	100	100	100	100	100	100	100	100	93	100	100	100
Kibuye	100	100	100	100	100	100	100	100	100	100	92	100	100	100	100	100	100	100	100	100	100	100
Kirinda	100	100	100	100	100	100	100	100	100	100	100	100	100	100	100	100	100	100	100	100	100	100
Mugonero	100	100	100	100	100	100	100	100	100	100	100	100	100	100	100	100	100	100	100	100	100	100
Shyira	100	94	100	100	100	100	100	100	100	100	100	100	94	100	100	100	94	94	94	100	100	100
Muhororo	100	100	100	100	100	100	100	100	100	100	100	100	100	100	100	100	100	100	100	100	100	100
Kabaya	100	100	100	100	100	100	100	100	100	100	100	100	100	100	100	100	100	100	100	100	100	100
Ghundwe	90	100	100	100	100	100	100	100	100	100	100	100	100	100	100	100	100	100	90	100	100	100
Mibilizi	100	100	100	100	100	100	100	100	100	100	100	100	100	100	100	100	100	100	100	100	100	100
Gsenyi	100	94	100	100	100	100	100	100	100	100	100	100	100	94	100	100	100	100	100	100	100	100
Murunda	100	100	100	100	100	100	100	100	95	100	100	100	100	95	100	100	100	100	100	100	100	100
CHUK	100	100	100	100	100	100	100	100	100	100	100	100	100	100	100	100	100	100	100	100	100	100
Nyarugenge	89	100	100	100	100	100	100	100	100	100	100	100	100	100	100	100	100	100	100	100	100	100
Muhima	100	100	75	100	100	100	100	100	100	100	100	100	75	75	100	100	100	100	100	100	100	100
RVIH	100	100	100	100	100	100	100	100	100	100	100	100	100	100	100	100	100	100	100	100	100	100
Masaka	100	100	100	100	100	100	100	100	100	100	100	100	100	100	100	100	100	100	100	100	100	100
Kigababaga	100	100	100	95	100	100	100	100	100	95	95	95	95	80	100	95	95	95	100	100	100	100
Kacyiru	100	100	100	100	100	100	100	100	100	100	100	100	100	100	100	100	100	100	100	100	100	100
KFH	100	100	100	0	100	100	100	100	100	0	0	0	100	0	100	0	100	100	100	100	100	100
Carass Ndera	100	100	100	100	100	100	100	100	100	100	100	100	100	0	100	100	100	100	100	100	100	100
Nyabikenke	100	100	100	100	100	100	100	100	100	100	100	100	100	100	100	100	100	100	100	100	100	100
Rwanda(Average)	99	99	99	98	99	99	99	100	99	98	97	99	99	96	99	96	99	99	97	99	99	98

Details on completeness and timeliness for all health facilities are shown in the figures below.

Timeliness 2026																						
Hospital catchment area	W01	W02	W03	W04	W05	W06	W07	W08	W09	W10	W11	W12	W13	W14	W15	W16	W17	W18	W19	W20	W21	W22
Nyagatare	93	86	100	93	86	100	100	93	100	100	100	100	100	100	100	86	93	100	100	86	93	100
Gatunda	100	100	89	100	100	100	89	100	100	100	100	100	100	89	100	100	100	100	100	100	100	100
Ngarara	100	88	100	100	100	100	100	100	100	100	100	100	100	100	100	100	100	100	100	100	100	100
Kiziguro	100	100	100	100	100	100	100	100	100	100	100	100	92	100	92	92	100	92	100	100	100	100
Gahini	75	88	100	88	88	75	88	100	75	100	100	100	88	63	88	88	100	100	88	100	100	100
Rwinkwavu	89	89	89	100	78	100	89	78	100	100	78	89	100	78	78	100	100	100	89	78	100	78
Kibungo	100	94	94	100	100	100	100	100	100	100	100	94	94	88	88	94	94	82	88	88	94	100
Kirehe	100	95	100	100	100	90	100	100	100	100	100	100	100	95	95	100	100	100	100	100	100	100
Rvamagana	100	100	100	83	83	89	94	100	89	94	100	94	72	89	89	94	94	83	89	94	78	89
Nyamata	100	100	100	94	100	100	100	100	100	100	100	100	82	71	76	94	100	76	94	88	100	88
Kirihira	100	100	100	100	100	100	100	100	100	100	100	100	89	89	100	89	100	100	89	100	100	89
Rutongo	100	100	100	100	93	100	100	100	100	100	93	100	100	100	89	100	93	100	100	87	93	100
Gatonde	100	100	100	100	100	100	100	100	100	100	100	100	100	100	100	100	100	100	100	100	100	100
Butaro	95	90	100	100	90	100	85	100	95	100	90	95	85	95	95	95	90	95	90	95	90	90
Ruli	100	100	100	100	100	100	100	100	100	100	100	100	89	89	100	100	100	89	100	100	100	89
Nemba	100	90	100	100	80	100	100	100	100	100	100	100	100	90	90	100	100	90	100	100	100	100
Ruhengeri	94	94	100	100	94	83	100	94	83	94	100	83	83	78	100	56	94	94	94	100	94	94
Byumba	100	88	100	96	96	96	100	96	100	100	96	100	96	92	100	100	92	100	96	96	100	100
CHUB	100	100	100	100	100	100	100	100	100	100	100	100	100	100	100	100	100	100	100	100	100	100
Kabutare	100	100	100	100	100	100	100	95	100	100	100	100	95	93	95	100	100	89	95	89	95	95
Kabagayi	100	100	100	100	100	100	100	100	100	100	100	92	100	100	100	100	100	100	92	100	100	100
Kibilizi	100	100	91	100	100	91	100	100	100	100	91	100	100	100	100	100	100	100	100	100	100	100
Gakoma	100	100	100	100	83	100	100	100	100	100	100	100	100	100	100	100	100	100	100	100	100	100
Gtwe	100	100	100	100	78	89	100	89	100	89	100	100	100	56	94	56	100	89	100	100	100	100
Ruhango	100	100	100	100	100	100	100	100	100	100	100	100	100	100	94	100	100	100	100	100	100	100
Femera Rukoma	93	100	93	93	100	100	100	100	93	100	100	87	100	80	100	100	100	100	100	100	100	100
Nyanza	100	100	100	95	89	95	95	100	100	100	95	95	100	89	100	95	95	95	79	95	100	95
Kigeme	100	100	100	100	92	100	100	92	100	100	85	100	100	92	100	100	100	100	92	100	92	100
Kaduha	100	90	100	100	100	100	100	90	90	100	100	100	100	100	100	100	70	100	100	100	100	90
Munini	100	100	88	100	100	100	100	100	100	100	94	100	100	94	100	95	100	100	100	100	100	100
Bushenge	100	88	100	100	100	100	100	100	100	100	100	100	100	100	100	100	100	100	100	88	100	100
Kibogora	100	100	93	100	100	100	100	100	100	100	100	100	100	86	100	100	100	100	93	100	100	100
Kibuye	100	100	100	100	100	100	92	100	92	100	92	100	100	100	90	100	100	100	100	100	100	100
Kirinda	100	100	83	100	100	100	100	100	100	100	100	100	100	100	100	100	100	100	100	100	100	83
Mugonero	100	100	86	100	100	100	100	100	100	100	100	100	100	100	100	100	100	100	100	100	100	100
Shyira	100	94	100	100	100	94	100	100	94	100	100	100	94	100	100	100	94	94	94	100	94	94
Muhororo	100	100	100	100	100	90	100	100	100	100	100	100	100	100	100	100	100	100	100	100	90	100
Kabaya	100	100	100	100	100	100	100	100	100	100	100	100	100	100	100	100	100	100	100	100	100	100
Ghundwe	90	90	100	90	70	100	100	100	100	100	100	100	100	100	95	95	100	100	90	100	100	100
Mibilizi	100	100	92	100	100	100	100	100	100	100	100	100	100	100	100	100	100	100	100	100	92	100
Gsenyi	100	94	100	100	100	100	100	100	100	100	100	100	100	94	93	100	94	100	100	100	94	100
Murunda	100	100	84	100	100	95	100	100	95	100	95	100	95	95	100	100	95	100	100	100	100	100
CHUK	100	100	100	100	100	100	100	100	100	100	100	100	100	100	100	100	100	100	100	100	100	100
Nyarugenge	89	100	100	100	100	100	100	100	89	100	100	100	100	100	100	100	100	100	100	100	100	89
Muhima	100	100	75	100	100	100	100	100	100	100	100	100	75	75	100	100	100	100	75	100	75	100
RMH	0	100	100	100	100	100	100	100	100	100	100	100	100	100	100	100	100	100	100	100	100	100
Masaka	92	100	100	100	100	100	100	100	100	100	100	100	100	100	100	100	100	100	100	100	100	100
Kigababaga	100	100	95	95	80	100	95	100	100	95	95	95	95	80	100	90	95	95	90	95	90	95
Kacyiru	100	100	100	100	0	100	100	100	100	100	100	100	100	100	100	100	100	100	100	100	0	100
KFH	100	100	100	0	0	100	0	100	100	0	0	0	100	0	100	0	100	100	0	100	100	100
Caraes Ndera	100	100	100	100	0	100	100	100	100	100	100	100	100	0	0	100	100	100	0	0	0	0
Nyabikenke	100	100	100	100	100	100	100	100	100	100	100	100	100	100	100	100	100	100	100	100	100	100
Rwanda(Average)	98	97	97	97	95	98	98	99	98	98	96	98	97	92	95	95	98	98	96	96	97	97