



Republic of Rwanda
Ministry of Health



WEEKLY EPIDEMIOLOGICAL BULLETIN

WEEK **23** 01-07 June 2026





Editorial message

Effective and efficient disease surveillance systems contribute to the reduction of morbidity, disability and mortality from disease outbreaks and health emergencies.

This weekly bulletin presents the epidemiological status of the priority diseases, conditions, and public-health events under surveillance in Rwanda. These data aim to trigger a rapid response for rapid impact, actions and results oriented, a proactive preparedness, risk mitigation and prevention, intelligence, real-time information, and communication for decision making.

KEY EPIDEMIOLOGICAL HIGHLIGHTS



Event Based Surveillance (EBS) Highlights:



Alerts from Impuruza system: **20** alerts



15 human deaths



2 dog bites



1 alert of a person with unexplained bleeding



2 alerts related to animals, including 1 of the cluster of sick animals and 1 for a cluster of animal deaths.

Alerts from EIOS: **6** alerts



Cholera outbreak in Borno State, Nigeria

Nigeria: Cholera Outbreak Expands

Bangladesh: Concurrent Dengue and Measles Crises

Ebola outbreak update in Uganda

Three Vaccines Under Development Against Bundibugyo Ebola Strain

Democratic Republic of the Congo: Ebola Outbreak Update

UMUJYANAMA W'UBUZIMA
MINISITERI Y'UBUZIMA
rbc RWANDA
BIOMEDICAL
CENTER
Healthy People. A Wealthy Nation



Indicator Based Surveillance (IBS) Highlights:



435 cases of immediately reportable diseases were notified by **130** health facilities nationwide. These included cases of chicken pox, severe malaria, suspected shigellosis, suspected measles/rubella, suspected Mpox, acute flaccid paralysis, suspected cholera, suspected human influenza, suspected VHF, Mumps, and snake bites.



62 deaths were reported by **23** health facilities through the electronic Integrated Disease Surveillance and Response (eIDSR) system. Most deaths were perinatal deaths and deaths of children under 5 years.






Outbreaks and events updates in week 23





Weekly updates on ongoing outbreaks:

Ongoing outbreaks:

-  Mpox outbreak
-  Measles outbreaks in different districts of Rwanda
-  Cholera outbreak in Rusizi district

New outbreak:

-  No new outbreak recorded
-  Updates on Ebola Virus Disease outbreak preparedness in Rwanda



Completeness and timeliness



In Epi Week 23, the overall completeness and timeliness of surveillance data reporting in Rwanda were 98% and 95%, respectively.



Weekly updates on Event Based Surveillance (EBS)

Description: Event-Based Surveillance (EBS) is a type of public health surveillance system that detects and reports unusual health events or disease outbreaks in a timely manner. The system is designed to detect signals of potential public health threats and allow a rapid response to prevent or control the spread of diseases. RBC is implementing EBS through the PHS&EPR Division.

Currently, an electronic Community Event-Based Surveillance System (eCBS), Hotline and Epidemic Intelligence from Open Source (EIOS) are being used to detect and report events of public health importance from the community and media. The process for the establishment of other types of EBS is still ongoing.

Alerts from Impuruza system: 20 signals

Those signals were received from the community. They included 15 human deaths in the community, 2 dog bites, 1 alert of a person with unexplained bleeding, 2 alerts related to animals, including 1 of the cluster of sick animals and 1 for a cluster of animal deaths.

Alerts from EIOS: 6 alerts

1. Cholera outbreak in Borno State, Nigeria

Cholera cases in Borno State have surpassed 3,000 cases with 37 deaths reported across 36 wards in seven local government areas, making it a significant public health emergency. The outbreak started on 1 May and was confirmed on 4 May 2026, with the highest burden in Maiduguri Metropolitan Council (>2,000 cases) and Jere (>1,000 cases). More than 100 new cases were reported within 24 hours. Authorities attribute transmission to contaminated water, poor sanitation, open defecation, and rainy season conditions. Response measures include WASH interventions, water chlorination, hygiene promotion, case management, and planned cholera vaccination campaigns supported by partners including WHO, UNICEF, and MSF.

2. Nigeria: Cholera Outbreak Expands

Nigeria has recorded 5,260 suspected cholera cases and 67 deaths across 33 states and the Federal Capital Territory. Children under five remain the most affected group. Borno State accounts for 86% of all reported cases, with ongoing transmission linked to contaminated water sources, poor sanitation, and overcrowding. Response measures include treatment centers, oral cholera vaccination, water chlorination, and active case finding.

<https://punchng.com/cholera-children-worst-hit-as-5260-cases-67-deaths-recorded/>

3. Bangladesh: Concurrent Dengue and Measles Crises

Bangladesh is facing simultaneous measles and dengue outbreaks. Dengue has caused 6 deaths and 3,307 cases so far in 2026, while measles-related deaths have approached 600 with over 81,000 infections reported. Health experts warn that prolonged monsoon conditions, urban sanitation challenges, and insufficient preventive measures may worsen the dengue situation, adding pressure to an already strained health system.

<https://gphin.canada.ca/cepr/showarticle.jsp?docId=1021683511>

4. Ebola outbreak update in Uganda

Uganda confirmed 6 new Ebola cases, bringing the total number of confirmed cases to 15. All newly reported infections are contacts of previously identified cases, indicating ongoing transmission within known chains. To date, 2 patients have recovered and been discharged, 12 remain hospitalized, and 1 death has been reported. Uganda has implemented preventive measures including restrictions on high-risk mass gatherings and physical greetings (e.g., handshakes) to reduce transmission. Neighboring countries, including Rwanda, Burundi, Tanzania, and Zambia, reportedly strengthened preparedness and prevention measures.

<https://gphin.canada.ca/cepr/showarticle.jsp?docId=1021668377>

Weekly updates on Event Based Surveillance (EBS)

5. Three Vaccines Under Development Against Bundibugyo Ebola Strain

Scientists are accelerating efforts to develop three candidate vaccines against the Bundibugyo strain of Ebola, for which no licensed vaccine currently exists. The outbreak has caused over 1,000 suspected cases and more than 250 deaths, primarily in DRC and Uganda. Vaccine candidates are being developed by the International AIDS Vaccine Initiative (IAVI), University of Oxford, and Moderna. Experts warn that the outbreak could become one of the most severe Ebola epidemics if control measures and vaccine development are delayed. However, the earliest vaccine candidates are not expected to be available for human use for several months.

<https://www.dnes.bg/a/5-zdrave/723543-napreva-ra-s-vremeto-tri-vaksini-sreshtu-ebola-sa-v-protse-s-na-razrabotka>

6. Democratic Republic of the Congo: Ebola Outbreak Update

The DRC has reported 363 confirmed Ebola cases and 62 deaths since the outbreak was declared on 15 May 2026. Ituri Province remains the epicenter, accounting for 341 cases and 48 deaths. The outbreak has spread to other provinces and Uganda, where 15 cases have been detected. WHO has classified the event as a Public Health Emergency of International Concern (PHEIC).

<https://gphin.canada.ca/cepr/showarticle.jsp?docId=1021683876BASED>



WEEKLY UPDATES ON EVENT-BASED SURVEILLANCE (EBS)

Description: Rwanda had implemented Indicator-Based Surveillance according to the IDSR guidelines 3rd edition where 45 priority diseases, health conditions, and public health events are being monitored and reported from health facilities countrywide on a regular basis.

Diseases that are prone to outbreaks are reported immediately within 24 hours after detection, while diseases that are considered endemic are reported on a weekly basis every Monday before midday.

A. IMMEDIATE REPORTABLE DISEASES - EPI WEEK 23

During this Epi week,

435 cases of immediately reportable diseases were notified by 130 health facilities:



3 cases of chicken pox (varicella) were reported by 2 health facilities.



361 suspected cases of Measles/Rubella were reported by 103 health facilities (they are described in the update on the outbreaks section)



9 cases of severe malaria were reported by 8 health facilities.



5 suspected cases of Mpox were reported by 5 health facilities; the samples were tested, and they were negative.



16 snake bite cases were reported by 9 health facilities.



1 case of acute flaccid paralysis was reported by 1 health facility.



5 suspected cases of shigellosis were reported by 3 health facilities; the samples were taken and sent to the laboratory



12 suspected cases of cholera were reported by 6 health facilities



2 suspected cases of human influenza were reported by 1 health facility; the samples were taken and sent to the laboratory

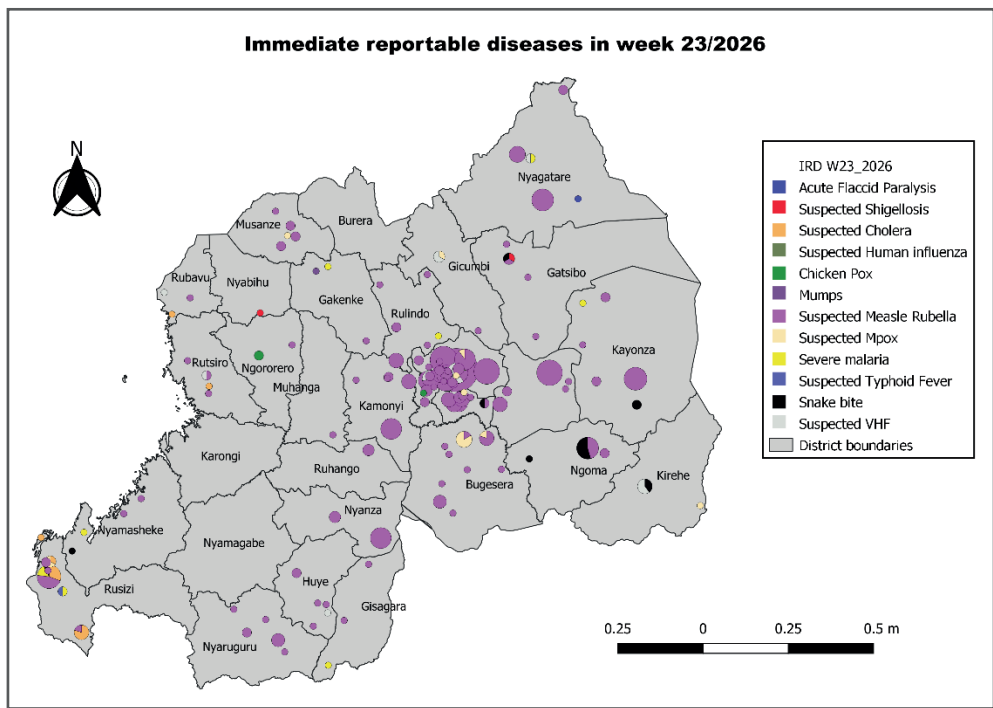


17 suspected cases of VHF were reported by 8 health facilities; the samples were taken and sent to the laboratory



3 cases of mumps were reported by 2 health facilities

Geographical distribution of immediate reportable disease cases notified during the epi week 23 /2026

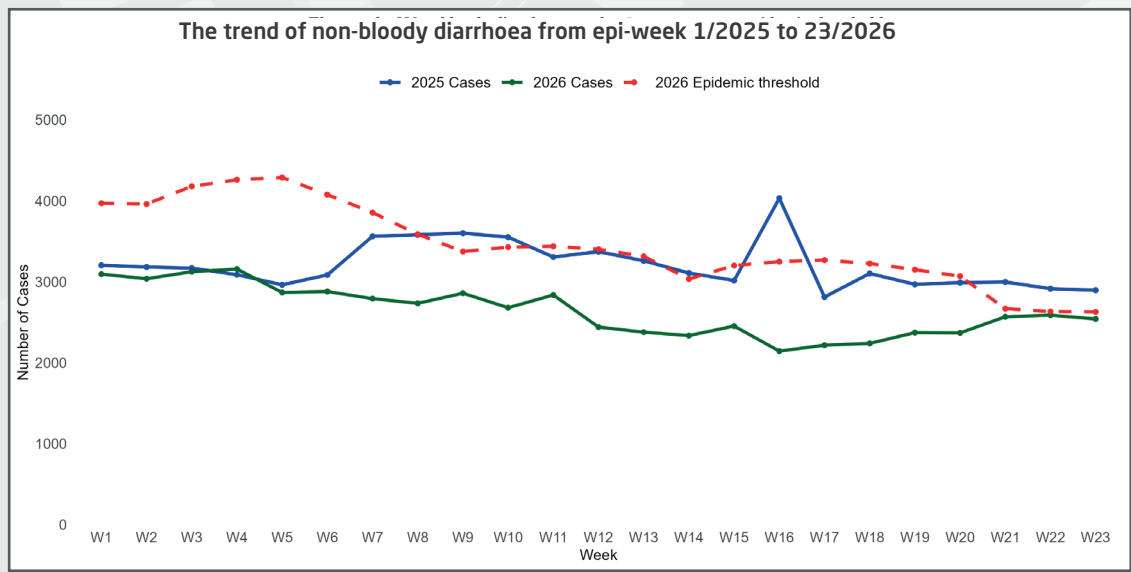
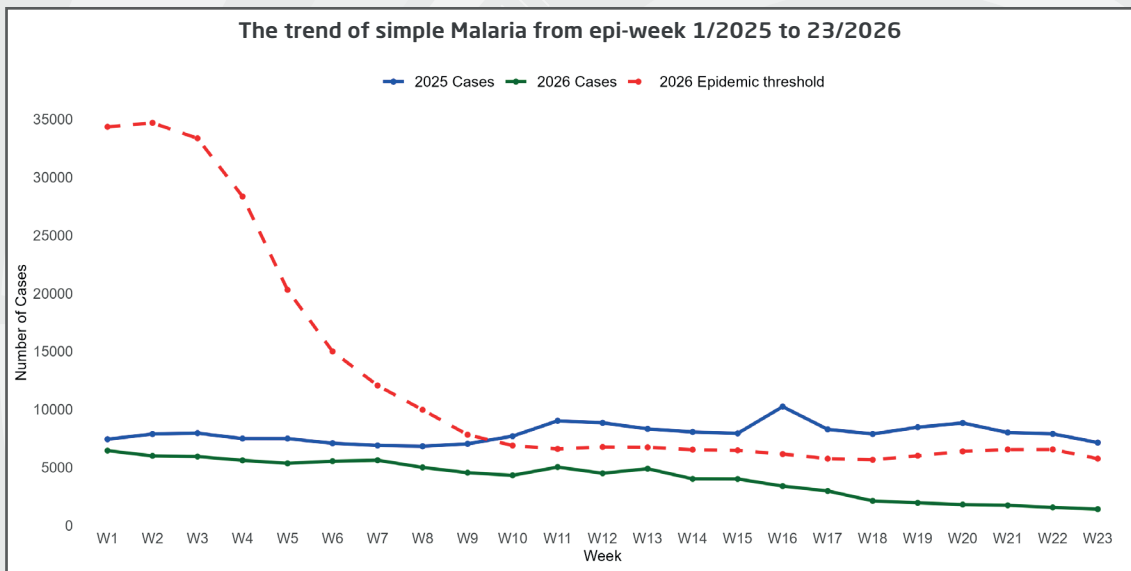
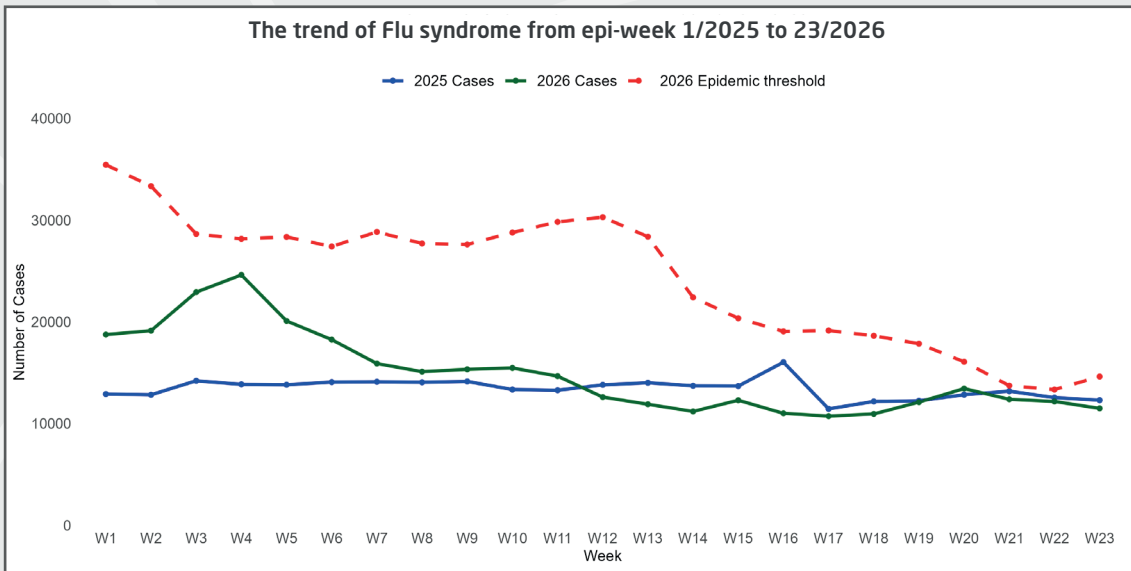


B. WEEKLY REPORTABLE DISEASES - EPI WEEK 23

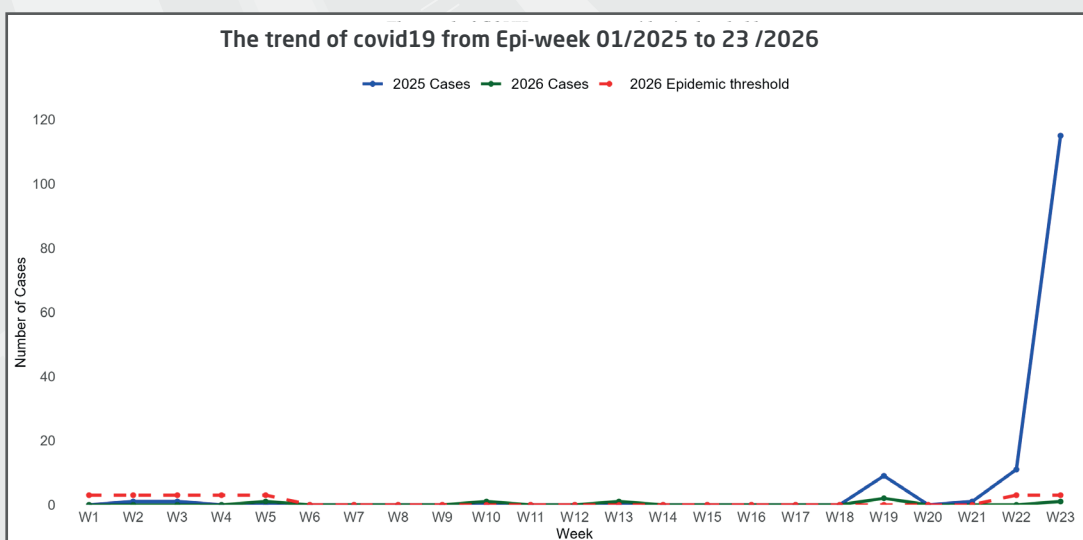
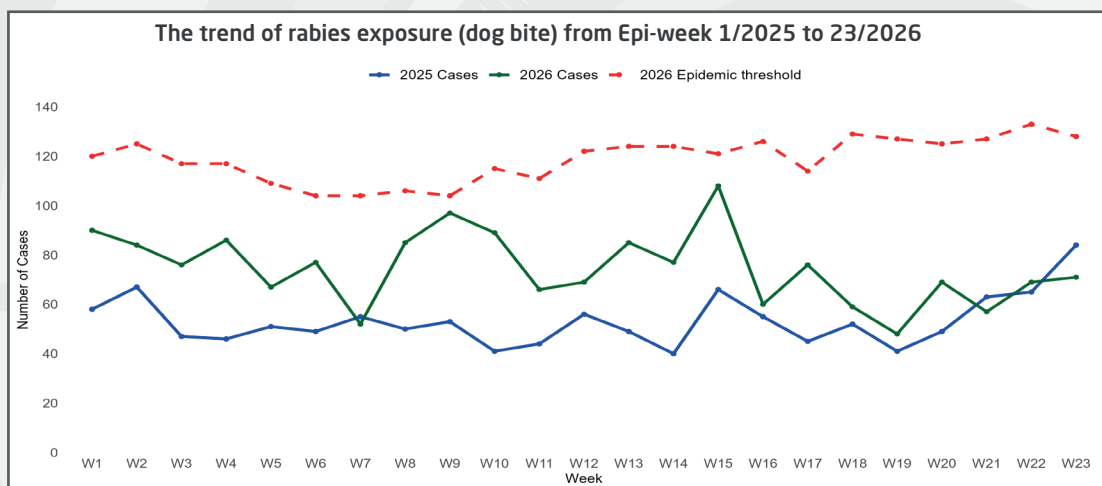
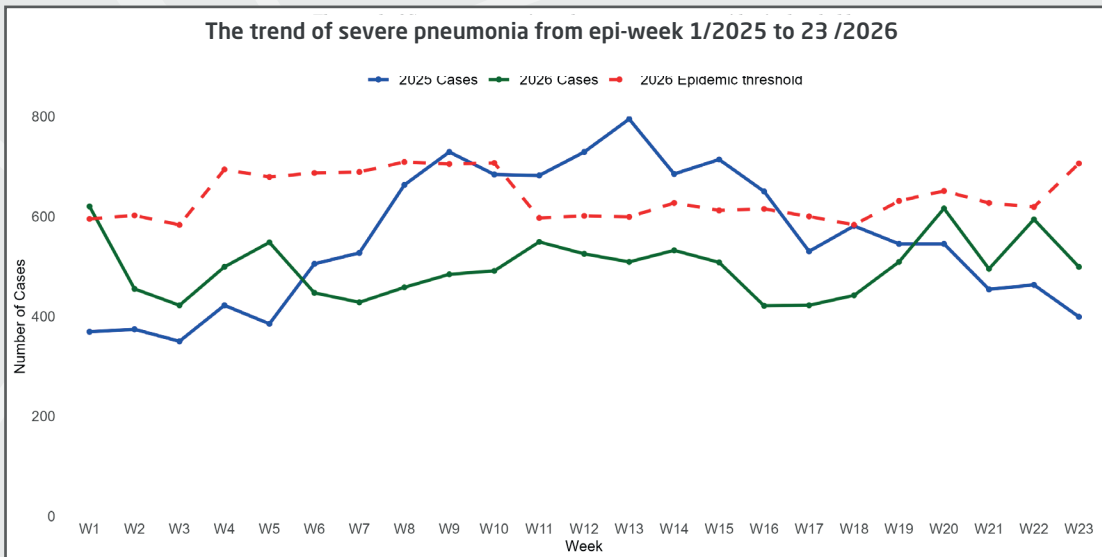
In Rwanda, after the adaptation of the IDSR guidelines 3rd edition, eight diseases events are being reported and analyzed on a weekly basis. These include flu syndrome, simple malaria, severe pneumonia for under 5 years, non-bloody diarrhea for under 5 years, COVID-19, dog bites, brucellosis, and trypanosomiasis. The monitoring trends of these weekly reportable diseases or health events helps to detect an unusual increase early.

In Epi Week 23, a thorough analysis was conducted, comparing the number of reported cases of the diseases monitored on a weekly basis to their respective epidemic thresholds. The results revealed that no disease cases surpassed the epidemic thresholds.

The figures below show the weekly reportable diseases trends:



The figures below show the weekly reportable diseases trends:



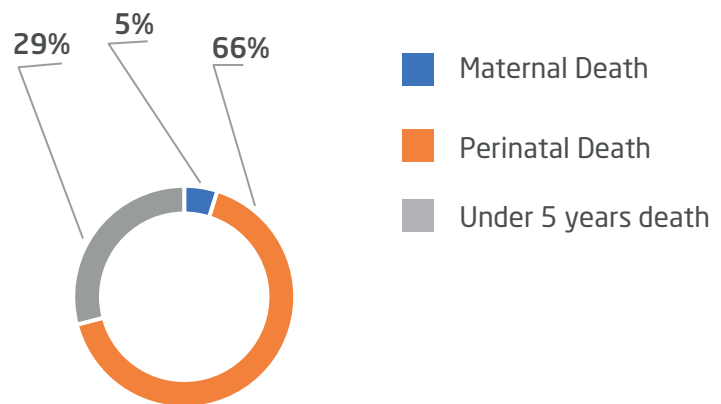


C. DISTRIBUTION OF REPORTED DEATHS IN eIDSR

As summarized in the Pie Chart below, a total of 62 deaths were reported through the electronic Integrated Disease Surveillance and Response (eIDSR) system. Among these deaths:

- 41 (66%) were perinatal deaths
- 18 (29%) were deaths of children under 5 years old
- 3 (5%) were maternal deaths

Type of deaths reported in week 23 /2026



Distribution of deaths by health facilities

62 deaths were reported from 23 health facilities as follows:



8 deaths were reported by Nyagatare DH (7 perinatal deaths and 1 death under 5 years)



7 deaths were reported by Gisenyi DH (6 perinatal deaths, and 1 death under 5 years)



5 deaths were each reported by:

- CHUB (1 maternal death, 3 perinatal deaths, and 1 death under 5 years)
- Murunda DH (5 perinatal deaths)



4 deaths were each reported by:

- Kabgayi DH (1 maternal death, 3 perinatal deaths)
- Kibuye RH (3 perinatal deaths, and 1 death under 5 years)
- Kirehe DH (1 perinatal death, and 3 deaths under 5 years)



3 deaths were each reported by:

- Nyanza DH and Ruhengeri RH (3 perinatal deaths)
- Rwinkwavu DH (1 perinatal death, and 2 deaths under 5 years)



2 deaths were each reported by:

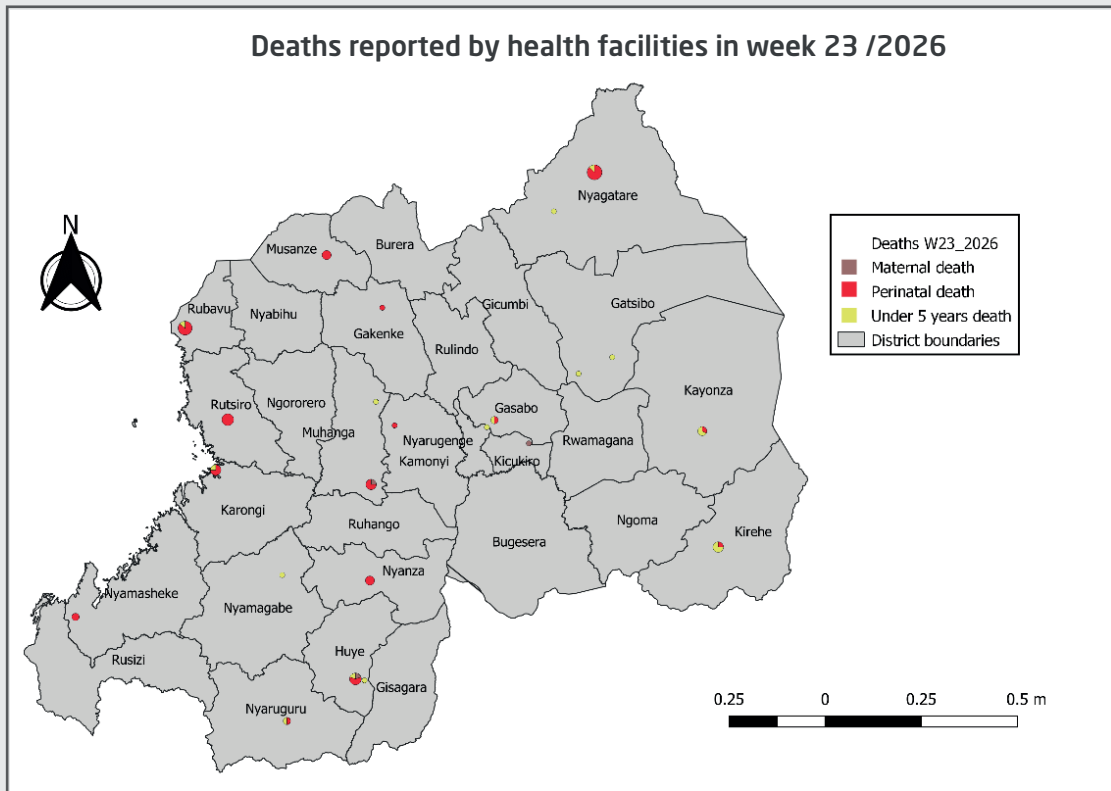
- Bushenge PH (2 perinatal deaths)
- Kacyiru police hospital, and Munini DH (1 perinatal death, and 1 death under 5 years)



1 death was each reported by:

- Rwanda Military Hospital (1 maternal death)
- Nemba DH and Kayumbu HC in Remera Rukoma DH (1 perinatal death)
- Nyabikenek DH, Gatunda DH, Kabutare DH, Kaduha DH, Kiziguro DH, Gasange HC in Kiziguro DH, and Muhima DH (1 death under 5 years)

Distribution of deaths by health facilities:



OUTBREAK AND EVENT UPDATES IN EPIDEMIOLOGICAL WEEK 23

1. Ongoing outbreaks

1.1 Ongoing Mpox outbreak in Rwanda

Rwanda confirmed its first two cases of Mpox on July 24, 2024. The current situation, as of 7th June 2026, was as follows:

8082	Cumulative suspected cases
5	New suspected cases
131	Total confirmed cases
0	New confirmed cases
0	Cases under follow up
0	New discharged case



Actions taken

In response to the Mpox outbreak, significant measures are being implemented at both the central and district levels. The District Command Posts have been activated to bolster preparedness and improve response efforts. Key actions include:

- Door-to-door active case searches for early detection
- Heightened screening and surveillance in schools and public areas
- Screening at points of entry (POE)
- Ring vaccination
- Public awareness campaigns

1.2 Measles outbreaks in different provinces

1.2.1 Southern Province

The current situation, as of 7th June 2026, was as follows:

Six affected districts were: **Nyanza, Gisagara, Huye, Nyaruguru, Ruhango, and Kamonyi**

637 Cumulative suspect cases

46 New suspect cases

403 Total confirmed cases

1.2.2 Western province

Measles Outbreak in Rubavu district

The current situation as of 7th June 2026, was as follows:

No recent active case recorded

1.2.3 Eastern Province

The current situation since 10/12/2025; as of 7th June 2026, was as follows:

The following six districts were affected with 27 active cases distributed as follows:

Nyagatare (4), **Bugesera (4),**
Kayonza (9), **Gatsibo (1),**
Rwamagana (7), **Ngoma (2)**

12.4 City of Kigali

The current situation as of 7th June 2026, was as follows:

86 active cases in **Gasabo, Kicukiro, and Nyarugenge** districts



Actions taken

- Isolation and clinical management of identified cases
- Outbreak investigations had been carried out in these different areas affected
- Risk communication and community awareness
- Active case searching
- Vaccination

1.3 Cholera outbreak in Rusizi districts

The current situation of the ongoing Cholera outbreak in Rusizi district, as of 7th June 2026, was as follows:

113	Cumulative suspected cases
10	New suspected cases
103	Total confirmed cases
12	New discharged cases
4	Cases under follow-up



Actions taken

- Case management of patients
- IPC measures applied
- Conducted a detailed case investigation
- Active case searching within the community, especially among close contacts and neighboring households
- Strengthened surveillance and reporting at community and health facility levels
- Performed risk communication and community sensitization on cholera prevention and early care-seeking
- Ensured availability of essential supplies (ORS, IV fluids, antibiotics, RDTs) at affected health facilities

2. New outbreaks and events occurred

No new outbreak occurred in week 23/2026

3. Updates on Ebola Virus Disease outbreak preparedness in Rwanda

The activities related to the preparedness to respond to a possible Ebola outbreak in Western and Northern provinces that remained ongoing, as the Ebola Virus Disease (EVD) outbreak is currently ongoing in the neighboring countries of DRC and Uganda. In Northern Province, the PHEOC is operating in Alert mode with different sectors, EVD preparedness activities were intensified, with PHEOC staff were deployed at the Points of Entry (PoE) of Cyanika and Gatuna, as well as in the catchment areas of Byumba and Butaro Level 2 Teaching Hospital (L2TH). Enhanced border surveillance and vigilance were being maintained.

In Western Province, the PHEOC was also operating in Alert mode through two functioning provincial Ebola command posts currently activated and sitting in Rubavu and Rusizi districts since week 21 (from 17/05/2026) as of this week.



eIDSR REPORTS COMPLETENESS & TIMELINESS

In Rwanda, eIDSR reports completeness and timeliness are scored as follows:

Greater or equal to 80%: High,

Between 60% and 79%: Moderate,

Less than 60%: Low.

In Epi Week 23, the overall completeness and timeliness of disease surveillance data reporting in Rwanda were 98% and 95%, respectively. Almost all hospitals achieved high scores above 80% for completeness, except one hospital that had a moderate completeness score (Kigeme DH) while for the timeliness, one hospital had a moderate score (Kigeme DH) and one hospital had the low timeliness score (CARAES Ndera hospital).

The hospitals, with moderate and low timeliness scores, had been advised to submit all required reports by Monday at 12:00.



Detailed completeness and timeliness performance for all health facilities is presented in the figures below.

Details on completeness and timeliness for all health facilities are shown in the figures below.

Completeness 2026																							
Hospital catchment area	W01	W02	W03	W04	W05	W06	W07	W08	W09	W10	W11	W12	W13	W14	W15	W16	W17	W18	W19	W20	W21	W22	W23
Nyagatare	100	93	100	100	100	100	100	93	100	100	100	100	100	100	100	93	93	100	100	86	93	100	100
Gatunda	100	100	100	100	100	100	100	100	100	100	100	100	100	100	100	100	100	100	100	100	100	100	100
Ngarara	100	100	100	100	100	100	100	100	100	100	100	100	100	100	100	100	100	100	100	100	100	100	100
Kiziguro	100	100	100	100	100	100	100	100	100	100	100	100	100	100	92	92	100	92	100	100	100	100	100
Gahini	75	88	100	88	100	100	100	100	88	100	100	100	100	100	100	88	100	100	88	100	100	100	100
Rwinkwavu	100	89	89	100	100	100	89	100	100	100	100	100	100	100	89	100	100	100	89	78	100	89	100
Kibungo	100	94	94	100	100	100	100	100	100	100	100	94	100	88	88	94	94	88	88	94	100	100	94
Kirehe	100	95	100	100	100	100	100	100	100	100	100	100	100	95	95	100	100	100	100	100	100	100	95
Rwamagana	100	100	100	89	89	94	94	100	94	94	89	94	89	89	89	94	100	94	89	94	83	89	83
Nyamata	100	100	100	100	100	100	100	100	100	100	100	100	94	88	94	94	100	94	100	94	100	88	100
Kinshira	100	100	100	100	100	100	100	100	100	100	100	100	89	100	89	89	100	100	100	100	100	89	100
Rutongo	100	100	100	100	100	100	100	100	100	100	100	100	100	100	93	100	100	100	100	93	100	100	100
Gatonde	100	100	100	100	100	100	100	100	100	100	100	100	100	100	100	100	100	100	100	100	100	100	100
Butaro	100	95	100	100	100	100	100	100	100	100	100	100	90	100	95	100	95	100	90	100	95	90	85
Ruli	100	100	100	100	100	100	100	100	100	100	100	100	100	100	100	100	100	89	100	100	100	89	100
Nenba	100	100	100	100	90	100	100	100	100	100	100	100	100	100	100	100	100	100	100	100	100	100	100
Ruhengeri	94	94	100	100	94	83	100	100	100	94	100	83	100	83	100	61	100	100	94	100	100	100	100
Byumba	100	92	100	96	100	100	100	96	100	100	96	100	100	96	100	100	100	100	100	100	100	100	96
CHUB	100	100	100	100	100	100	100	100	100	100	100	100	100	100	100	100	100	100	100	100	100	100	100
Kabutare	100	100	100	100	100	100	100	100	100	100	100	100	100	95	100	95	100	100	95	100	95	95	95
Kabgayi	100	100	100	100	100	100	100	100	100	100	100	100	100	100	100	100	100	100	100	100	100	100	100
Kibilizi	100	100	91	100	100	91	100	100	100	100	100	100	100	100	100	100	100	100	100	100	100	100	100
Gakoma	100	100	100	100	100	100	100	100	100	100	100	100	100	100	100	100	100	100	100	100	100	100	100
Gtwe	100	100	100	100	89	100	100	89	100	89	100	100	100	89	100	100	100	100	100	100	100	100	100
Ruhango	100	100	100	100	100	100	100	100	100	100	100	100	100	100	100	100	100	100	100	100	100	100	100
Ramara Rukoma	100	100	100	100	100	100	100	93	100	100	100	100	100	100	100	100	100	100	100	100	100	100	100
Nyanza	100	100	100	100	100	95	95	100	100	100	100	95	100	95	100	100	100	100	84	95	100	95	100
Kigeme	100	100	100	100	100	100	100	100	100	100	92	100	100	100	100	100	100	100	100	100	92	100	77
Kaduha	100	100	100	100	100	100	100	100	90	100	100	100	100	100	100	100	100	100	100	100	100	90	100
Munini	100	100	100	100	100	100	100	100	100	100	100	100	100	100	100	100	100	100	100	100	100	100	100
Bushenge	100	100	100	100	100	100	100	100	100	100	100	100	100	100	100	100	100	100	100	100	100	100	100
Kibogora	100	100	100	100	100	100	100	100	100	100	100	100	100	100	100	100	100	100	93	100	100	100	100
Kibuye	100	100	100	100	100	100	100	100	100	100	92	100	100	100	100	100	100	100	100	100	100	100	100
Kirinda	100	100	100	100	100	100	100	100	100	100	100	100	100	100	100	100	100	100	100	100	100	100	100
Mugonero	100	100	100	100	100	100	100	100	100	100	100	100	100	100	100	100	100	100	100	100	100	100	100
Shyira	100	94	100	100	100	100	100	100	100	100	100	100	94	100	100	100	94	94	94	100	100	100	100
Muhororo	100	100	100	100	100	100	100	100	100	100	100	100	100	100	100	100	100	100	100	100	100	100	100
Kabaya	100	100	100	100	100	100	100	100	100	100	100	100	100	100	100	100	100	100	100	100	100	100	100
Ghundwe	90	100	100	100	100	100	100	100	100	100	100	100	100	100	100	100	100	100	90	100	100	100	100
Mibilizi	100	100	100	100	100	100	100	100	100	100	100	100	100	100	100	100	100	100	100	100	100	100	100
Gsenyi	100	94	100	100	100	100	100	100	100	100	100	100	100	94	100	100	100	100	100	100	100	100	100
Murunda	100	100	100	100	100	100	100	95	100	100	100	100	100	95	100	100	100	100	100	100	100	100	100
CHUK	100	100	100	100	100	100	100	100	100	100	100	100	100	100	100	100	100	100	100	100	100	100	100
Nyarugenge	89	100	100	100	100	100	100	100	100	100	100	100	100	100	100	100	100	100	100	100	100	100	89
Muhima	100	100	75	100	100	100	100	100	100	100	100	75	75	100	100	100	100	100	100	100	100	100	100
RMH	100	100	100	100	100	100	100	100	100	100	100	100	100	100	100	100	100	100	100	100	100	100	100
Masaka	100	100	100	100	100	100	100	100	100	100	100	100	100	100	100	100	100	100	100	100	100	100	100
Kigababaga	100	100	100	95	100	100	100	100	100	95	95	95	95	80	100	95	95	95	100	100	100	100	100
Kacyiru	100	100	100	100	100	100	100	100	100	100	100	100	100	100	100	100	100	100	100	100	100	100	100
KFH	100	100	100	0	100	100	100	100	100	0	0	0	100	0	100	0	100	100	100	100	100	100	100
Caras Ndera	100	100	100	100	100	100	100	100	100	100	100	100	100	0	100	100	100	100	100	100	100	100	100
Nyabikenke	100	100	100	100	100	100	100	100	100	100	100	100	100	100	100	100	100	100	100	100	100	100	100
Rwanda(Average)	99	99	99	98	99	99	99	100	99	98	97	99	99	96	99	96	99	99	97	99	99	98	98

Details on completeness and timeliness for all health facilities are shown in the figures below.

Timeliness 2026																							
Hospital catchment area	W01	W02	W03	W04	W05	W06	W07	W08	W09	W10	W11	W12	W13	W14	W15	W16	W17	W18	W19	W20	W21	W22	W23
Nyagatare	93	86	100	93	86	100	100	93	100	100	100	100	100	100	100	86	93	100	100	86	93	100	93
Gatunda	100	100	89	100	100	100	89	100	100	100	100	100	100	89	100	100	100	100	100	100	100	100	100
Ngarama	100	88	100	100	100	100	100	100	100	100	100	100	100	100	100	100	100	100	100	100	100	100	100
Kiziguro	100	100	100	100	100	100	100	100	100	100	100	100	92	100	92	92	100	92	100	100	100	100	100
Gahini	75	88	100	88	88	75	88	100	75	100	100	100	88	63	88	88	100	100	88	100	100	100	100
Rwinkwavu	89	89	89	100	78	100	89	78	100	100	78	89	100	78	78	100	100	100	89	78	100	78	89
Kibungo	100	94	94	100	100	100	100	100	100	100	100	94	94	88	88	94	94	82	88	88	94	100	94
Kirehe	100	95	100	100	100	90	100	100	100	100	100	100	100	95	95	100	100	100	100	100	100	100	95
Rwamagana	100	100	100	83	83	89	94	100	89	94	100	94	72	89	89	94	94	83	89	94	78	89	83
Nyamata	100	100	100	94	100	100	100	100	100	100	100	100	82	71	76	94	100	76	94	88	100	88	88
Kinshira	100	100	100	100	100	100	100	100	100	100	100	100	89	89	100	89	100	100	89	100	100	89	100
Rutongo	100	100	100	100	93	100	100	100	100	100	93	100	100	100	89	100	93	100	100	87	93	100	93
Gatonde	100	100	100	100	100	100	100	100	100	100	100	100	100	100	100	100	100	100	100	100	100	100	100
Butaro	95	90	100	100	90	100	85	100	95	100	90	95	85	95	95	95	90	95	90	95	90	90	80
Ruli	100	100	100	100	100	100	100	100	100	100	100	100	89	89	100	100	100	89	100	100	100	89	89
Nemba	100	90	100	100	80	100	100	100	100	100	100	100	100	90	90	100	100	90	100	100	100	100	100
Ruhengeri	94	94	100	100	94	83	100	94	83	94	100	83	83	78	100	56	94	94	94	100	94	94	100
Byumba	100	88	100	96	96	96	100	96	100	100	96	100	96	92	100	100	92	100	96	96	100	100	92
CHUB	100	100	100	100	100	100	100	100	100	100	100	100	100	100	100	100	100	100	100	100	100	100	100
Kabutare	100	100	100	100	100	100	100	100	95	100	100	100	100	95	93	95	100	100	89	95	89	95	95
Kabgayi	100	100	100	100	100	100	100	100	100	100	100	92	100	100	100	100	100	100	92	100	100	100	100
Kibilizi	100	100	91	100	100	91	100	100	100	100	91	100	100	100	100	100	100	100	100	100	100	100	100
Gakoma	100	100	100	100	100	83	100	100	100	100	100	100	100	100	100	100	100	100	100	100	100	100	83
Gtwe	100	100	100	100	78	89	100	89	100	89	100	100	100	56	94	56	100	89	100	100	100	100	100
Ruhango	100	100	100	100	100	100	100	100	100	100	100	100	100	100	94	100	100	100	100	100	100	100	88
Ramara Rukoma	93	100	93	93	100	100	100	100	93	100	100	87	100	80	100	100	100	100	100	100	100	100	100
Nyanza	100	100	100	95	89	95	95	100	100	100	95	95	100	89	100	95	95	95	79	95	100	95	100
Kigeme	100	100	100	100	92	100	100	92	100	100	85	100	100	92	100	100	100	100	92	100	92	100	77
Kaduha	100	90	100	100	100	100	100	90	90	100	100	100	100	100	100	100	70	100	100	100	100	90	100
Murini	100	100	88	100	100	100	100	100	100	100	94	100	100	94	100	95	100	100	100	100	100	100	100
Bushenge	100	88	100	100	100	100	100	100	100	100	100	100	100	100	100	100	100	100	100	88	100	100	100
Kibogora	100	100	93	100	100	100	100	100	100	100	100	100	100	86	100	100	100	100	93	100	100	100	100
Kibuye	100	100	100	100	100	100	92	100	92	100	92	100	100	100	90	100	100	100	100	100	100	100	100
Kirinda	100	100	83	100	100	100	100	100	100	100	100	100	100	100	100	100	100	100	100	100	100	83	100
Mugonero	100	100	86	100	100	100	100	100	100	100	100	100	100	100	100	100	100	100	100	100	100	100	100
Shyira	100	94	100	100	100	94	100	100	94	100	100	100	94	100	100	100	94	94	94	100	94	94	89
Muhororo	100	100	100	100	100	90	100	100	100	100	100	100	100	100	100	100	100	100	100	100	90	100	100
Kabaya	100	100	100	100	100	100	100	100	100	100	100	100	100	100	100	100	100	100	100	100	100	100	100
Ghundwe	90	90	100	90	70	100	100	100	100	100	100	100	100	100	95	95	100	100	90	100	100	100	100
Mibilizi	100	100	92	100	100	100	100	100	100	100	100	100	100	100	100	100	100	100	100	100	92	100	100
Gisenyi	100	94	100	100	100	100	100	100	100	100	100	100	94	93	100	94	100	100	100	100	94	100	100
Murunda	100	100	84	100	100	95	100	100	95	100	95	100	95	95	100	100	95	100	100	100	100	100	100
CHUK	100	100	100	100	100	100	100	100	100	100	100	100	100	100	100	100	100	100	100	100	100	100	100
Nyarugenge	89	100	100	100	100	100	100	100	89	100	100	100	100	100	100	100	100	100	100	100	89	89	89
Muhima	100	100	75	100	100	100	100	100	100	100	100	100	75	75	100	100	100	100	75	100	75	100	100
RMH	0	100	100	100	100	100	100	100	100	100	100	100	100	100	100	100	100	100	100	100	100	100	100
Masaka	92	100	100	100	100	100	100	100	100	100	100	100	100	100	100	100	100	100	100	100	100	100	100
Kigababaga	100	100	95	95	80	100	95	100	95	95	95	95	80	100	90	95	95	90	95	90	95	95	95
Kacyiru	100	100	100	100	0	100	100	100	100	100	100	100	100	100	100	100	100	100	100	100	0	100	100
KFH	100	100	100	0	0	100	0	100	0	0	0	100	0	100	0	100	0	100	0	100	0	100	100
Carass Ndera	100	100	100	100	0	100	100	100	100	100	100	100	0	0	100	100	100	0	0	0	0	0	0
Nyabikenke	100	100	100	100	100	100	100	100	100	100	100	100	100	100	100	100	100	100	100	100	100	100	100
Rwanda(Average)	98	97	97	97	95	98	98	99	98	98	96	98	97	92	95	95	98	98	96	96	97	97	95